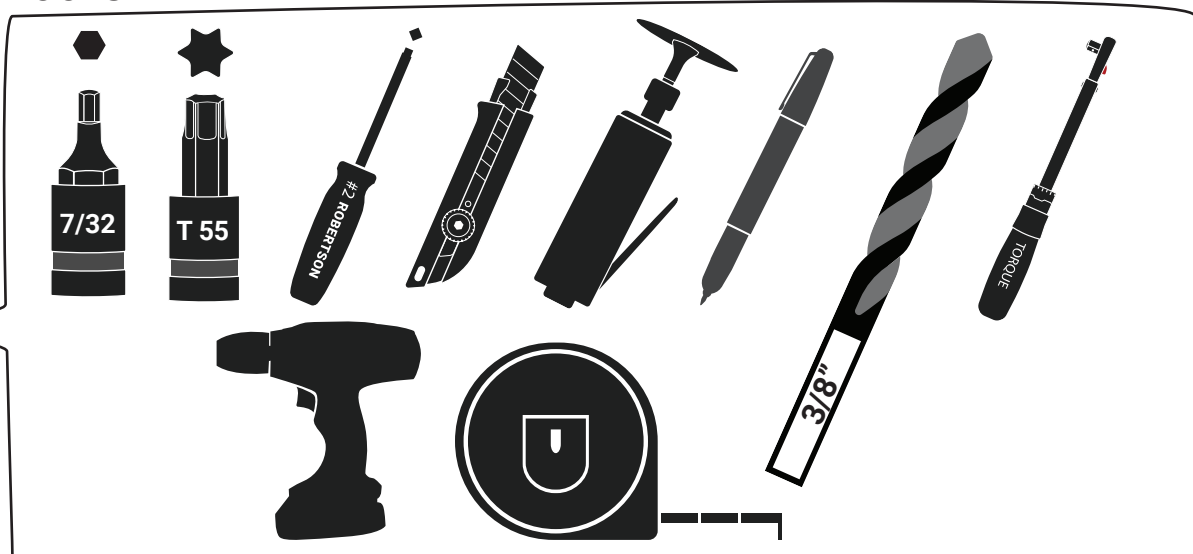
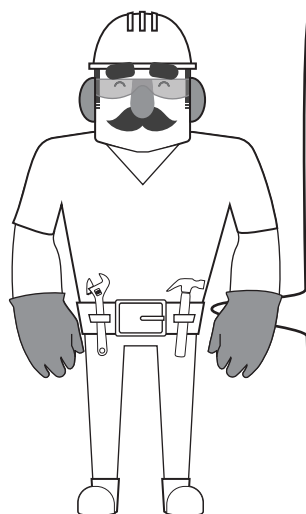


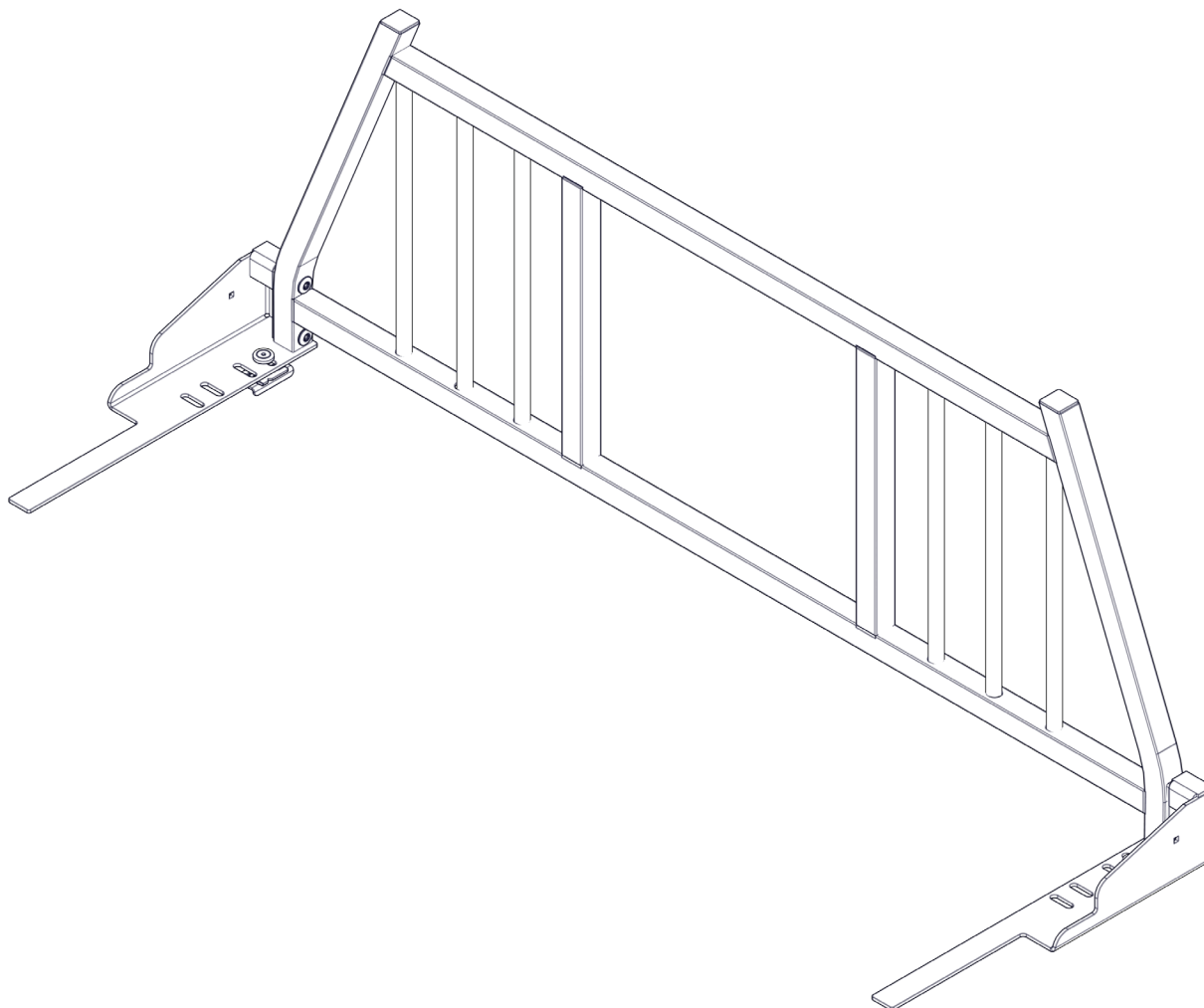
INSTALLATION INSTRUCTIONS: 2008-2018 RAM CROSS OVER BOX CAB GUARD

TOOLS NEEDED:



CAUTION:

This equipment is designed to be professionally installed by an approved up-fitter. Always wear ear and eye protection and exercise caution when installing Westcan products.

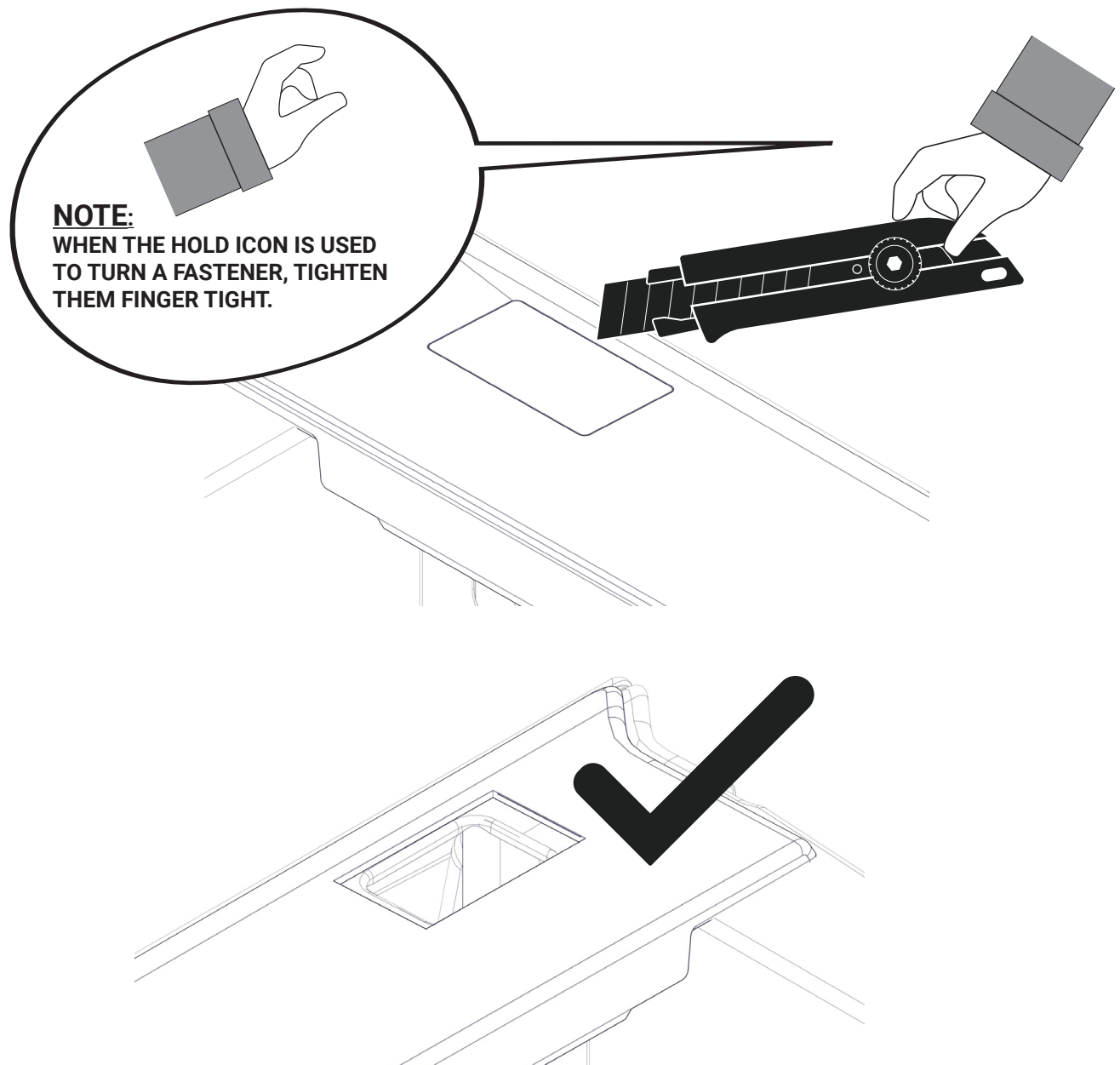


PREPARATION:

1. Ensure all parts are present and accounted for before installation. **Begin the installation of your cabguard before your rail caps.** Plan the location of your installation ahead of time and make sure your installation location does not impede any other components you are installing or damage the safety and functionality of your vehicle.
2. Exercise extreme diligence when drilling holes into a motor vehicle. Increasing complexity and model year changes can alter the location of fuel, hydraulic and electrical lines. Please visually inspect all locations prior to drilling.
3. Re-Torque the 3/8" x 1-3/4" Stainless Steele Countersink Bolt every 3 month.

BOX CAP PREPARATION:

Using the embossed lines in the plastic box cap, cut out to expose the front stake pocket. Exercise caution when cutting caps to avoid injury.

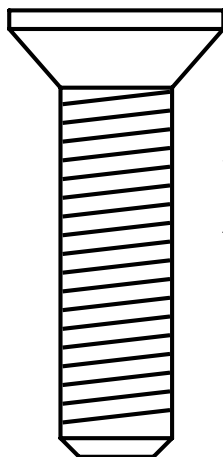


1

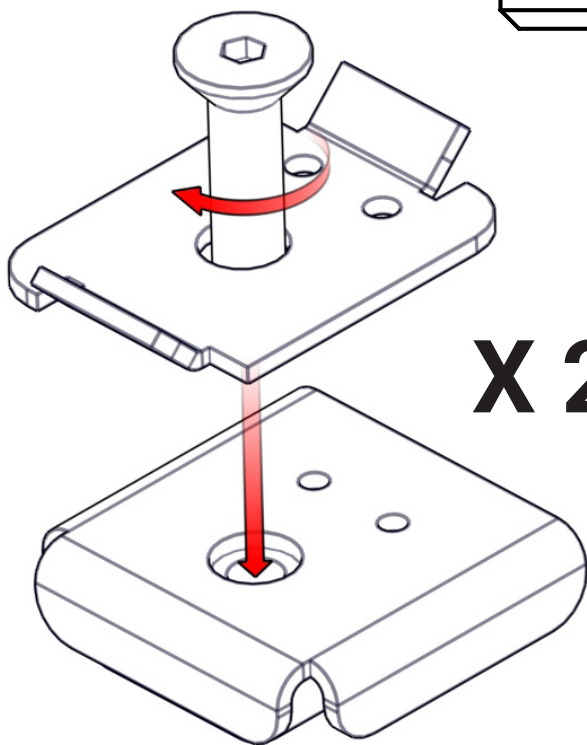
CUT PLASTIC CAP TO EXPOSE THE FRONT STAKE POCKETS.

2

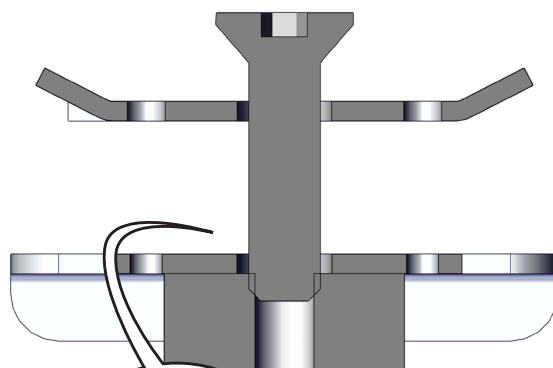
3/8 X 1 3/4 Stainless Steel Counter Sink Bolt



X 2



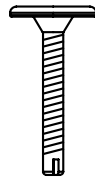
X 2



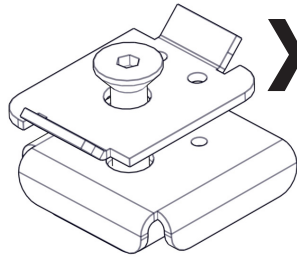
**THIS GAP IS
REQUIRED FOR
INSTALLATION**

3.

#10 - 1" Plated Zinc Robertson Powerhead Drill Tip Screw

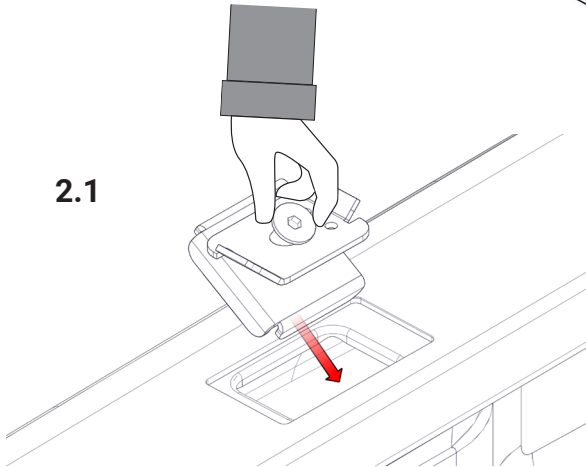


X 4

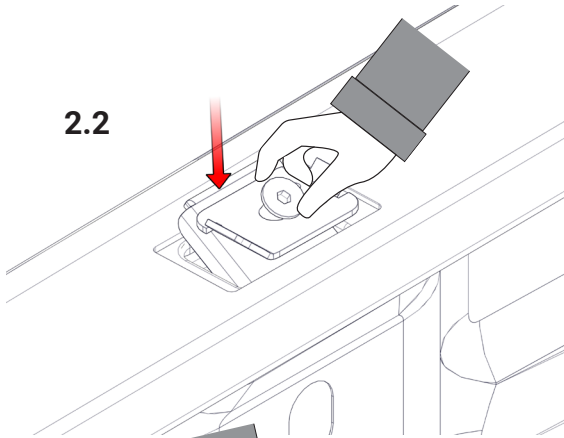


X 2

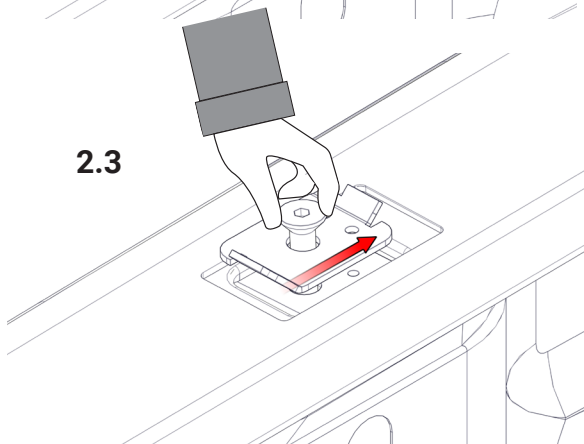
2.1



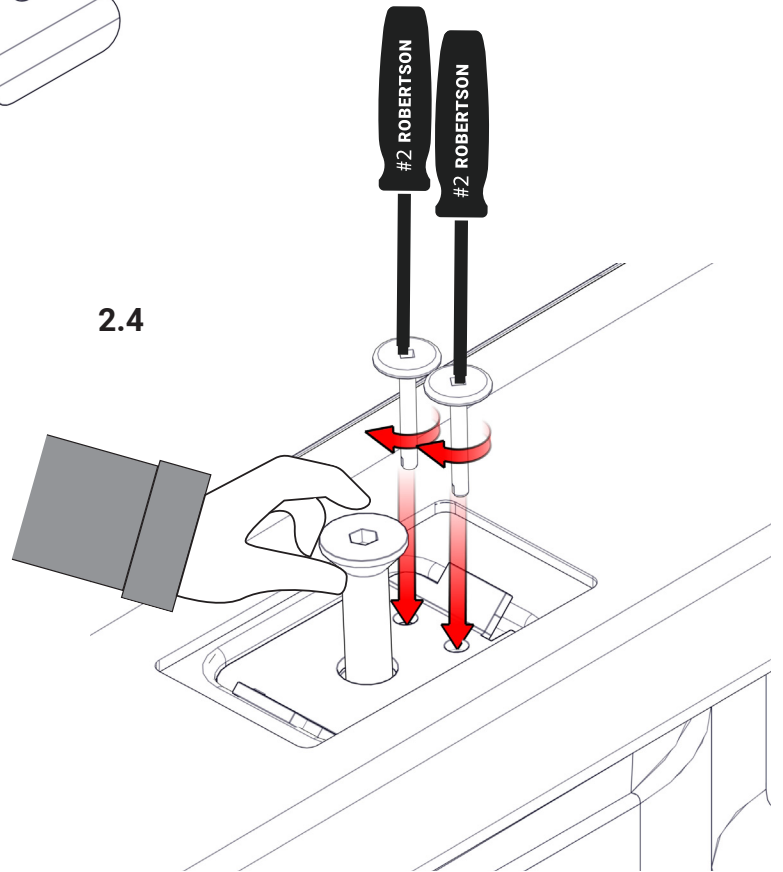
2.2



2.3

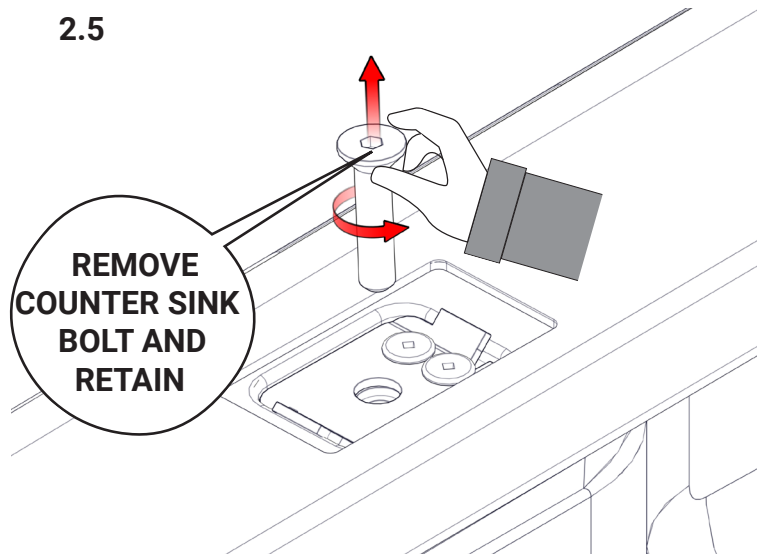


2.4

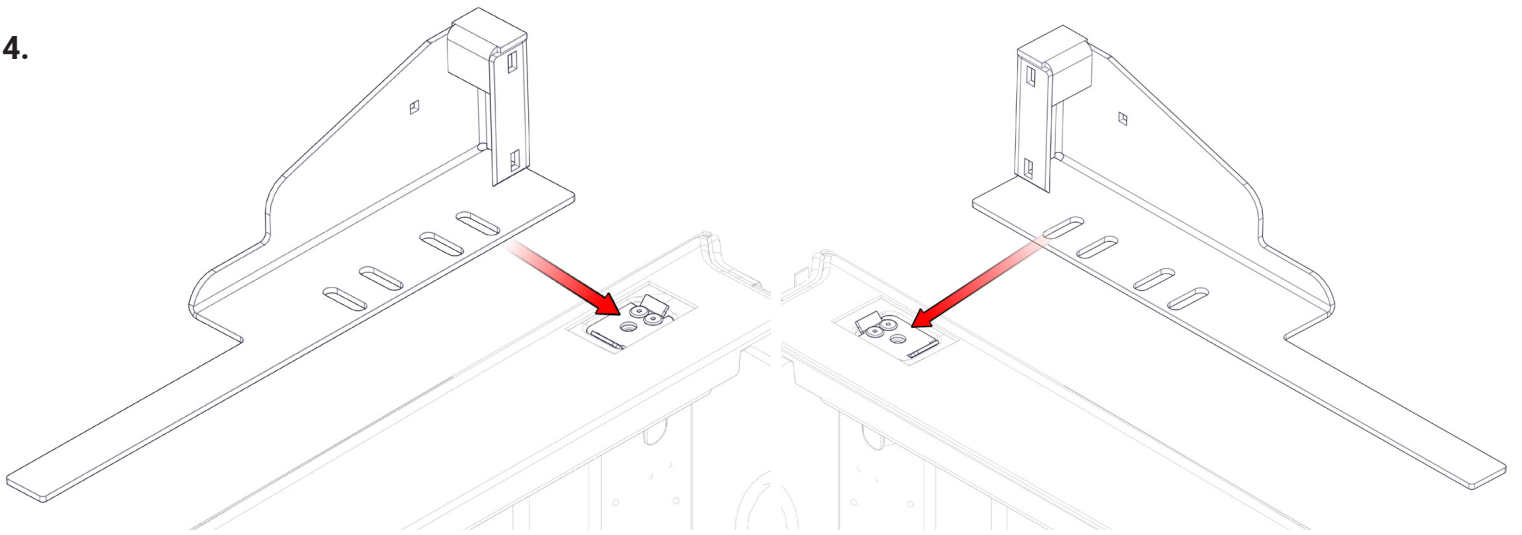


2.5

REMOVE
COUNTER SINK
BOLT AND
RETAIN



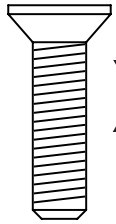
4.



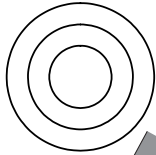
5.

3/8 X 1 3/4 Stainless Steel Counter Sink Bolt

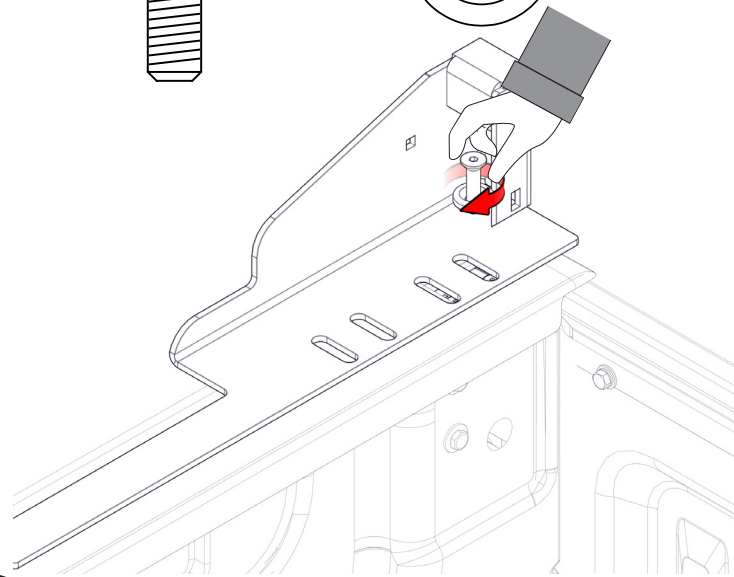
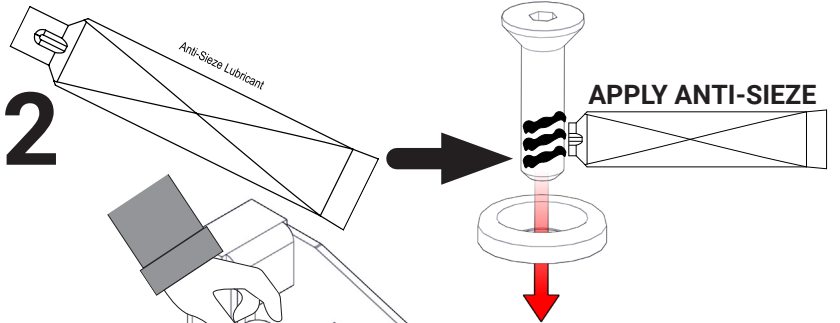
3/8" Stainless Steel Finishing Washer



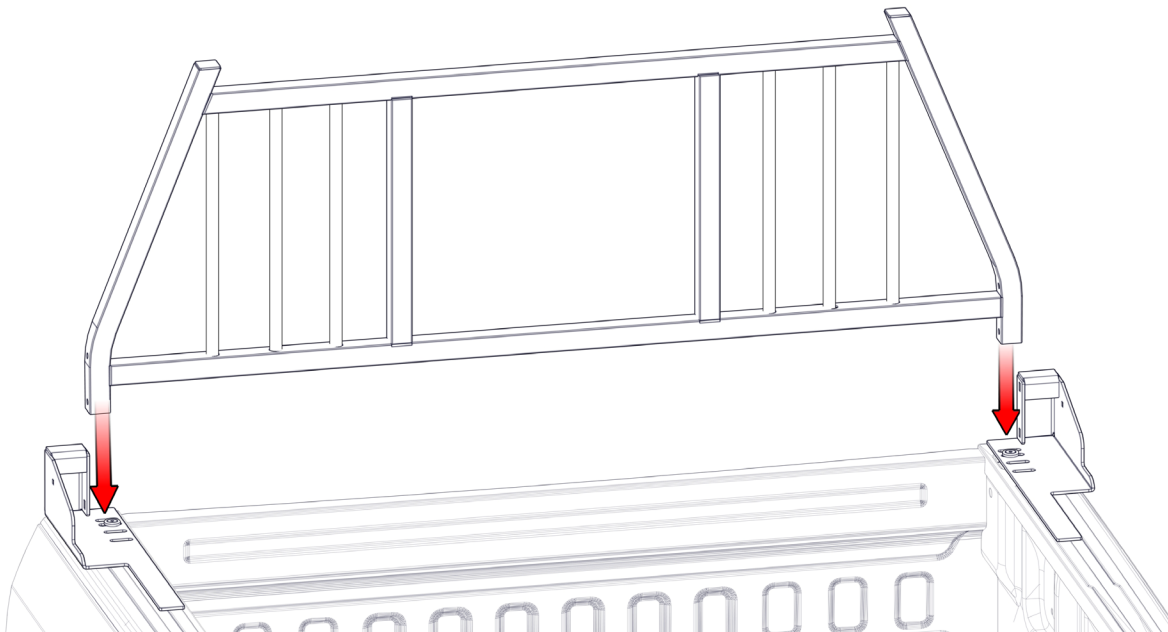
X 2



X 2



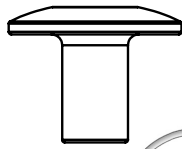
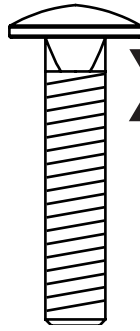
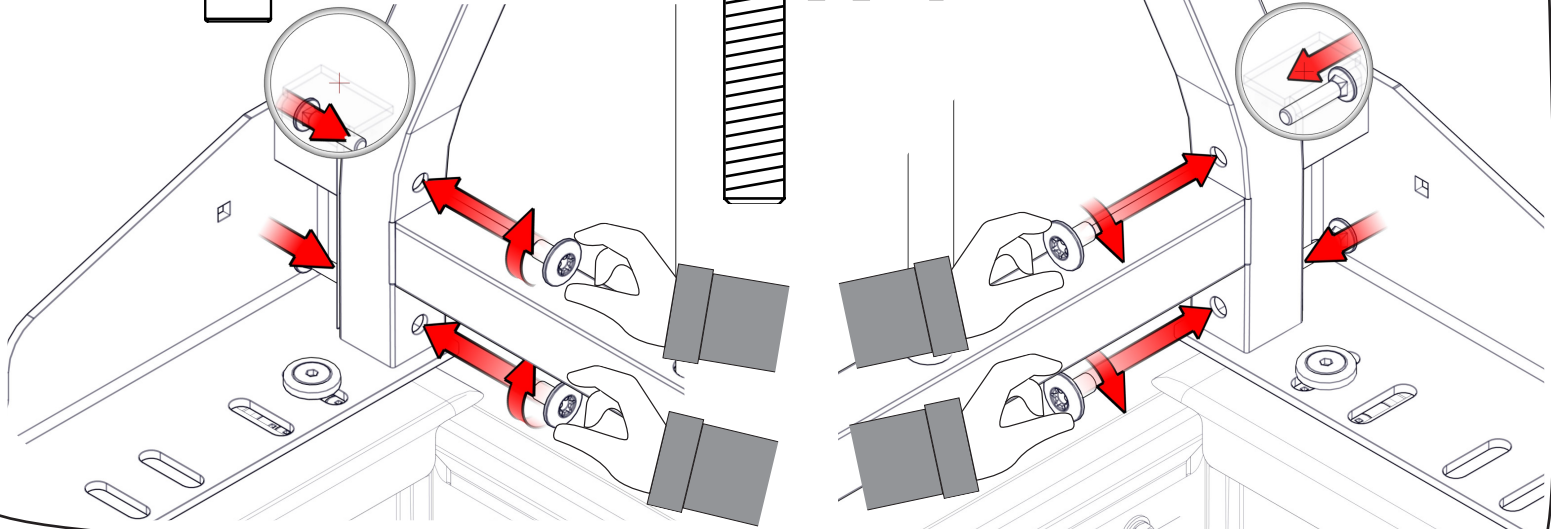
6.



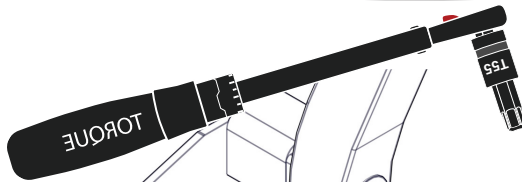
6.

5/16" X 5/8" Zinc Plated Camtainer Nut

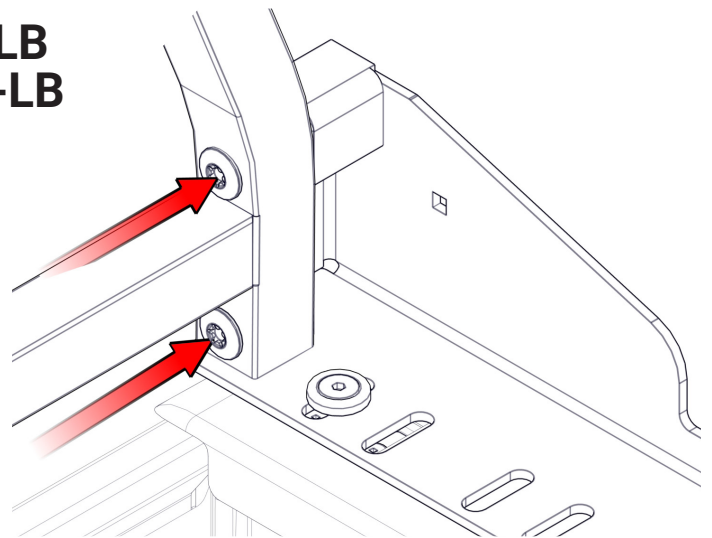
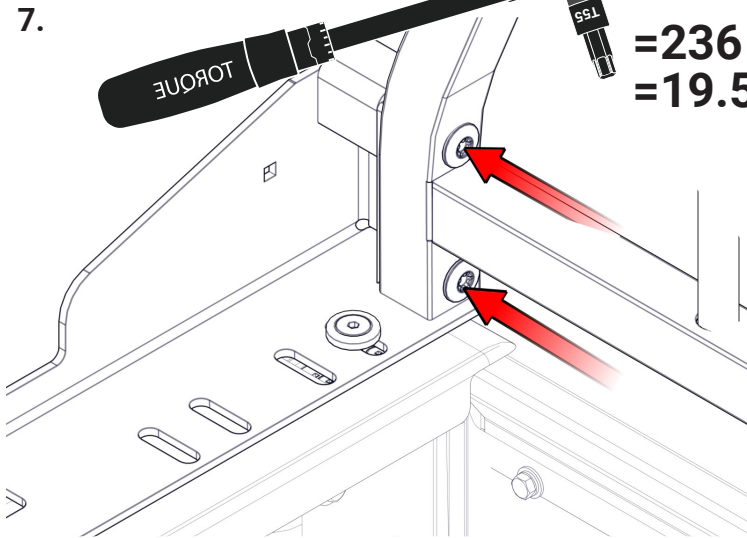
5/16 X 1-1/2 Stainless Steel Carriage Bolt

**X 4****X 4**

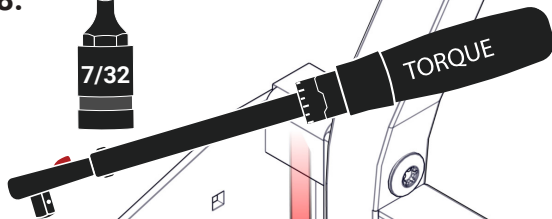
7.



=236 IN-LB
=19.5 FT-LB

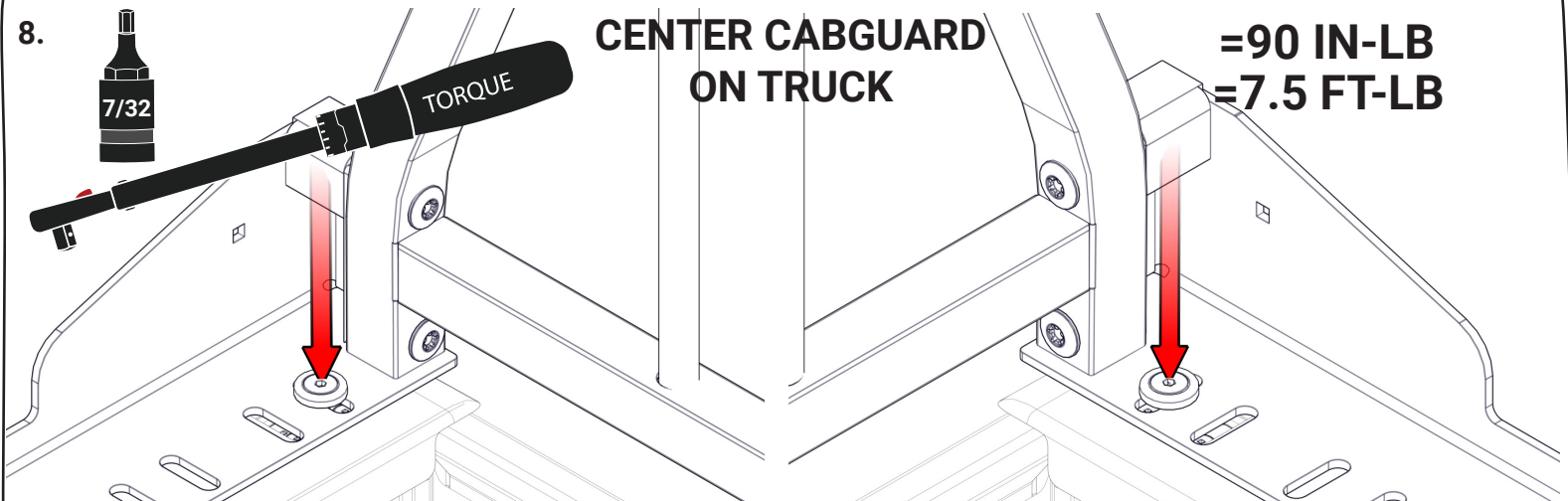


8.



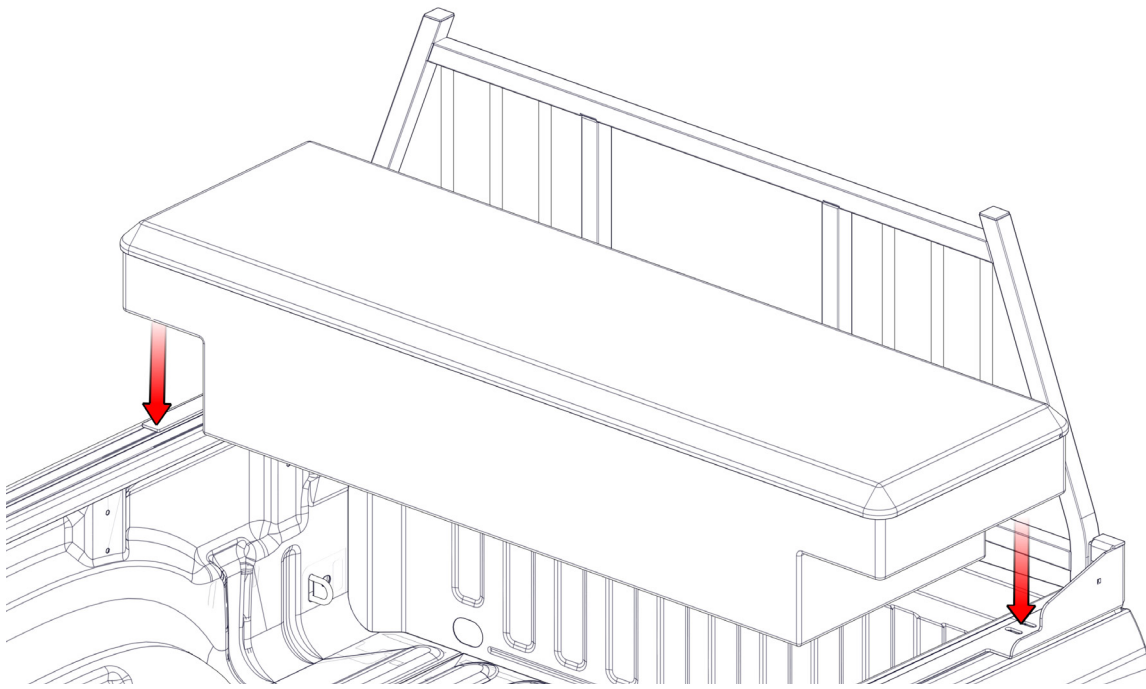
CENTER CABGUARD
ON TRUCK

=90 IN-LB
=7.5 FT-LB



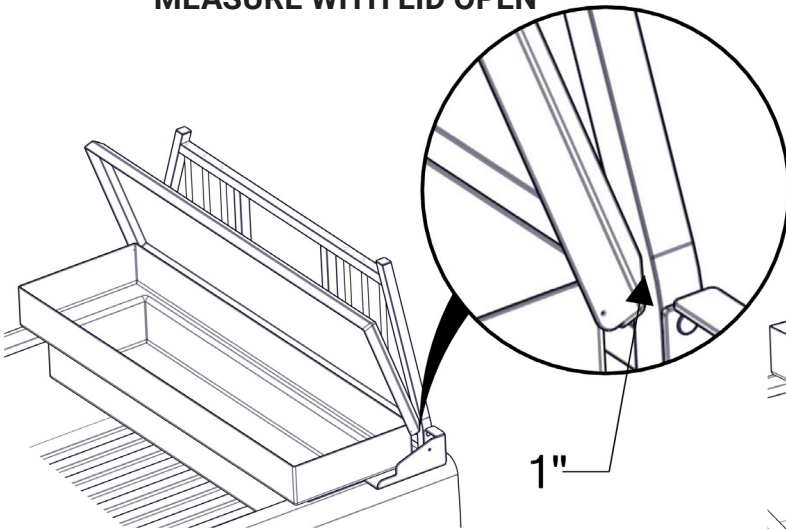
THIS STEP IS FOR INSTALLATIONS WITHOUT WESTCAN RAILCAPS ONLY. SKIP TO STEP 9 FOR INSTALLATIONS WITH WESTCAN RAILCAPS OR PROCEED TO STEP 11.

9.

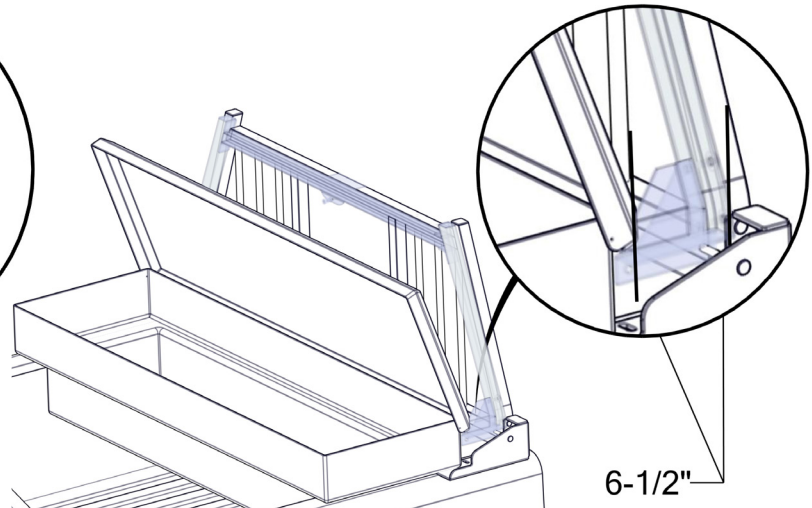


10.

**RECOMMENDED SPACING TO
CABGUARD WITHOUT A REAR RACK.
MEASURE WITH LID OPEN**

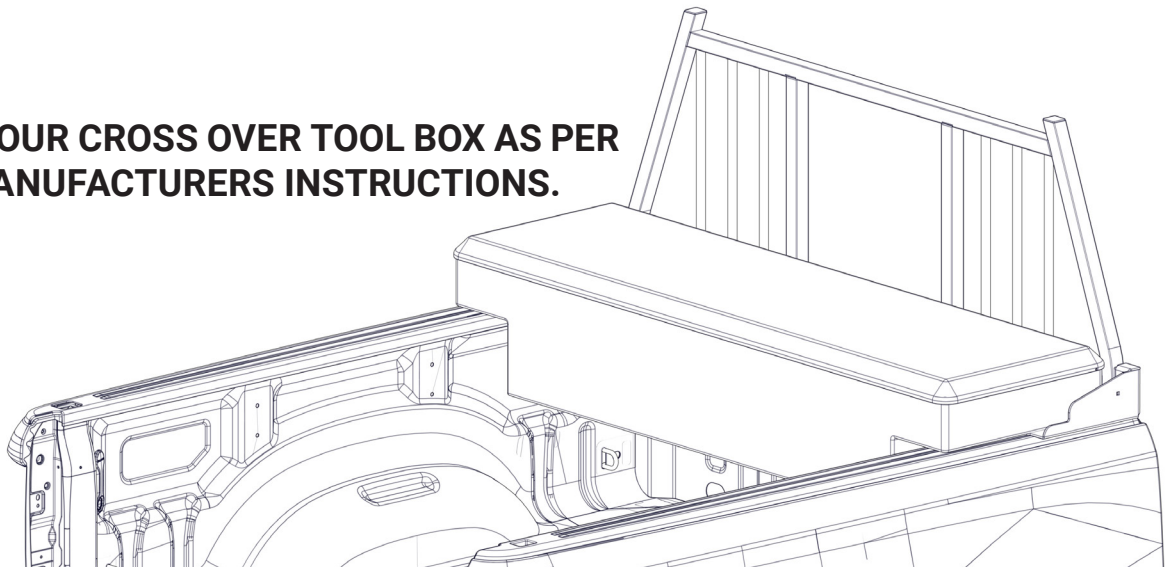


**RECOMMENDED SPACING TO
CABGUARD WITH A REAR RACK.
MEASURE WITH LID OPEN**



**11. THIS STEP IS FOR INSTALLATIONS WITHOUT WESTCAN RAILCAPS ONLY. SKIP
TO STEP 12 FOR INSTALLATIONS WITH WESTCAN RAILCAPS.**

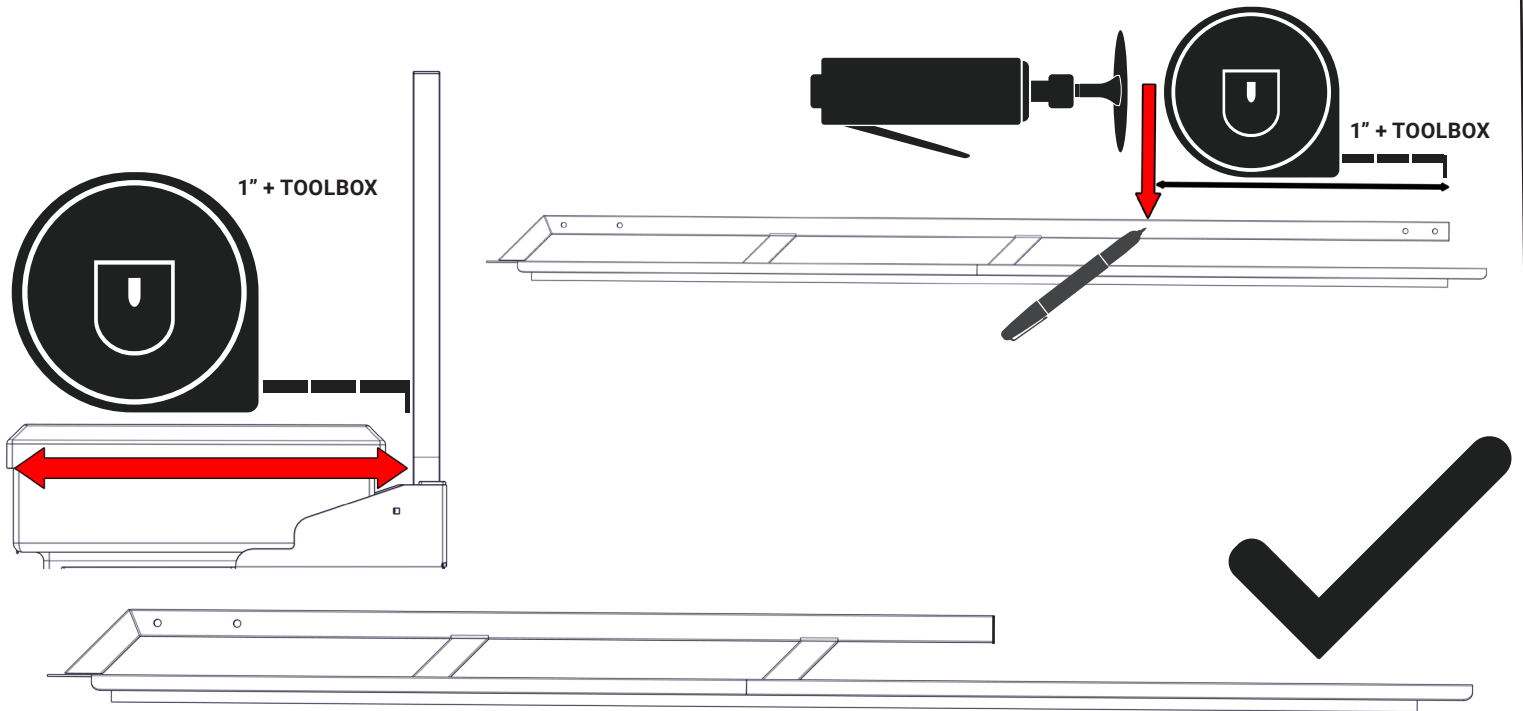
**INSTALL YOUR CROSS OVER TOOL BOX AS PER
THE MANUFACTURERS INSTRUCTIONS.**



12.

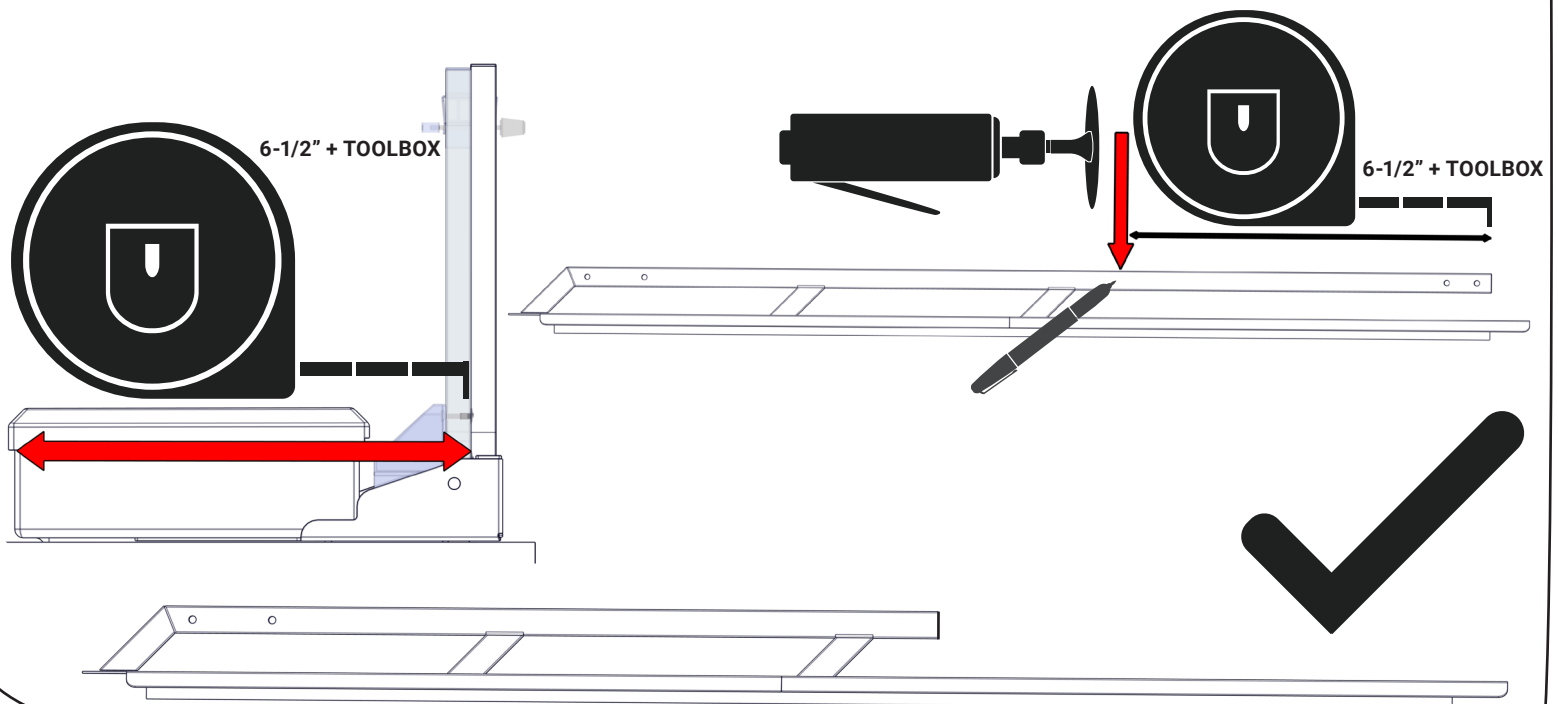
TIE RAIL CUT DOWN PROCESS FOR INSTALLS WITHOUT A REAR RACK

SEE STEP 10 FOR SPACING PROCESS WITHOUT A REAR RACK. MEASURE TO THE END OF THE END OF THE TOOLBOX, OMITTING THE LID.

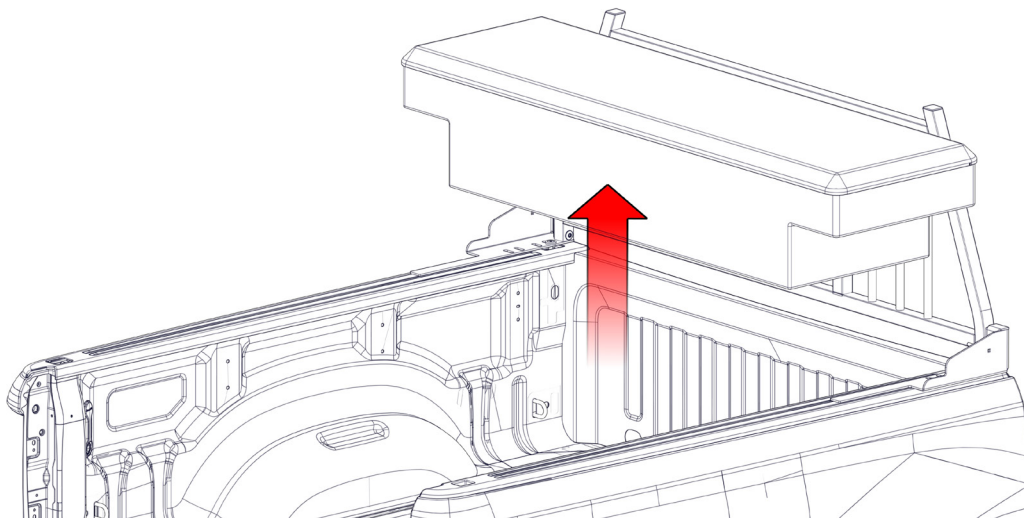


TIE RAIL CUT DOWN PROCESS FOR INSTALLS WITH A REAR RACK

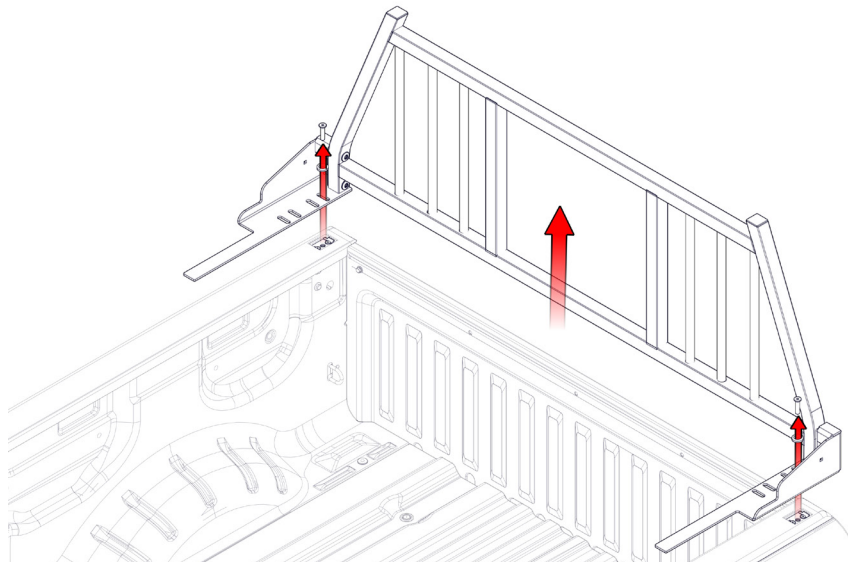
SEE STEP 10 FOR SPACING PROCESS WITH A REAR RACK. MEASURE TO THE END OF THE END OF THE TOOLBOX, OMITTING THE LID.



13.

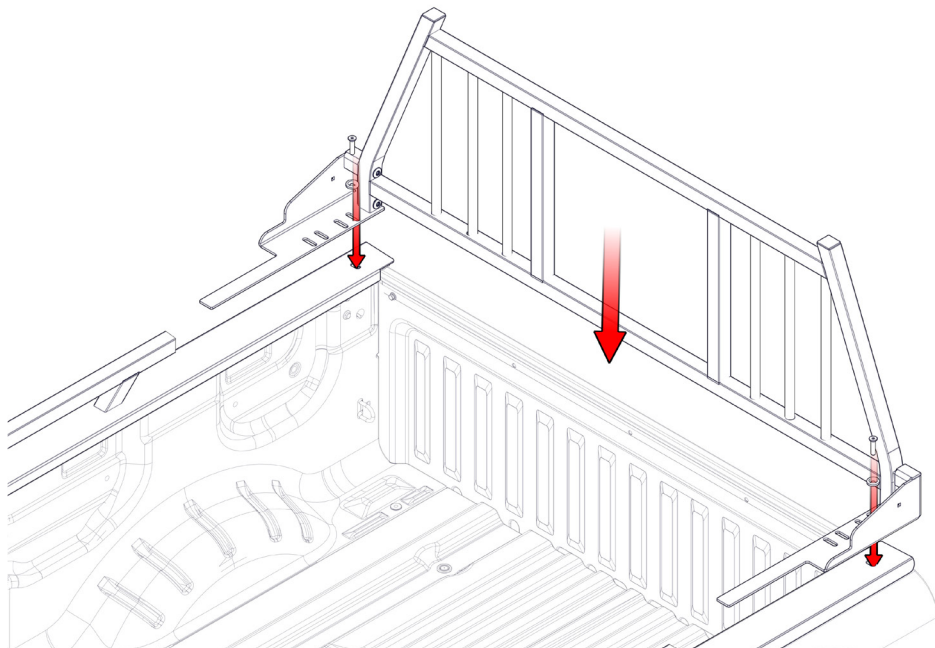


14.

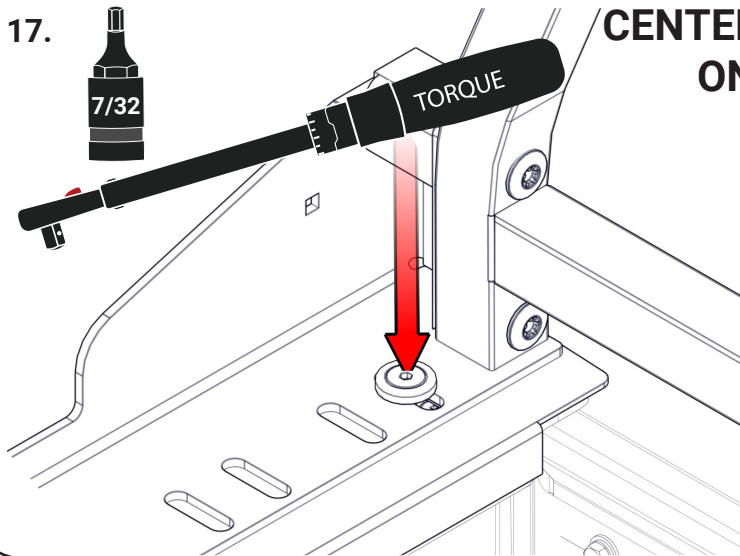


15. **INSTALL YOUR RAILCAPS WITH CUT DOWN TIE RAILS AS PER THE INSTRUCTIONS INCLUDED WITH THEM.**

16.

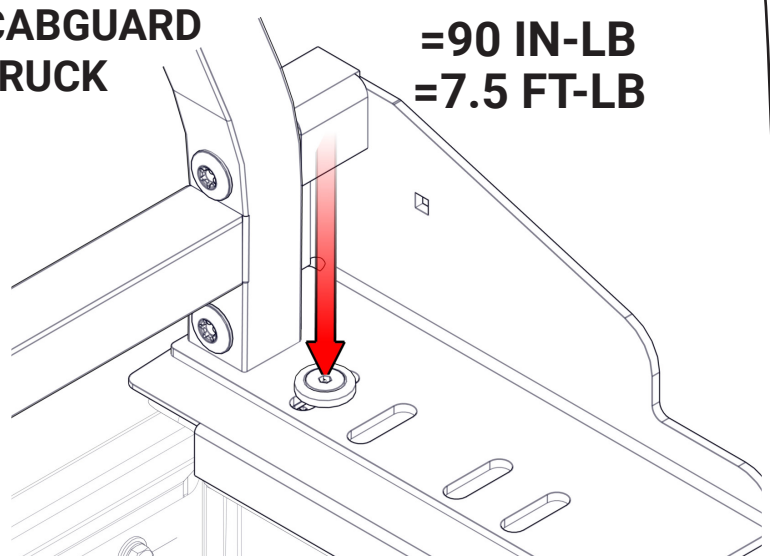


17.



**CENTER CABGUARD
ON TRUCK**

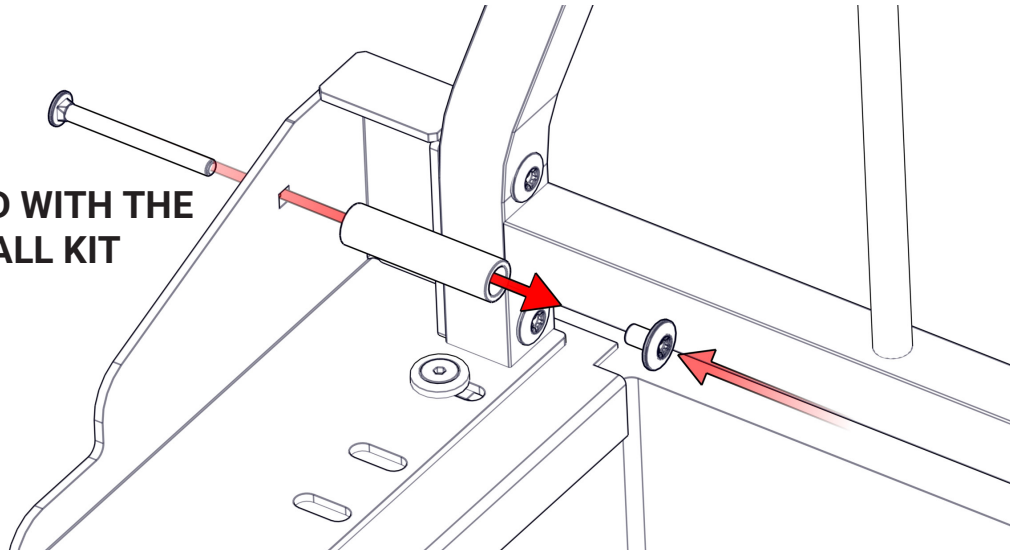
**=90 IN-LB
=7.5 FT-LB**



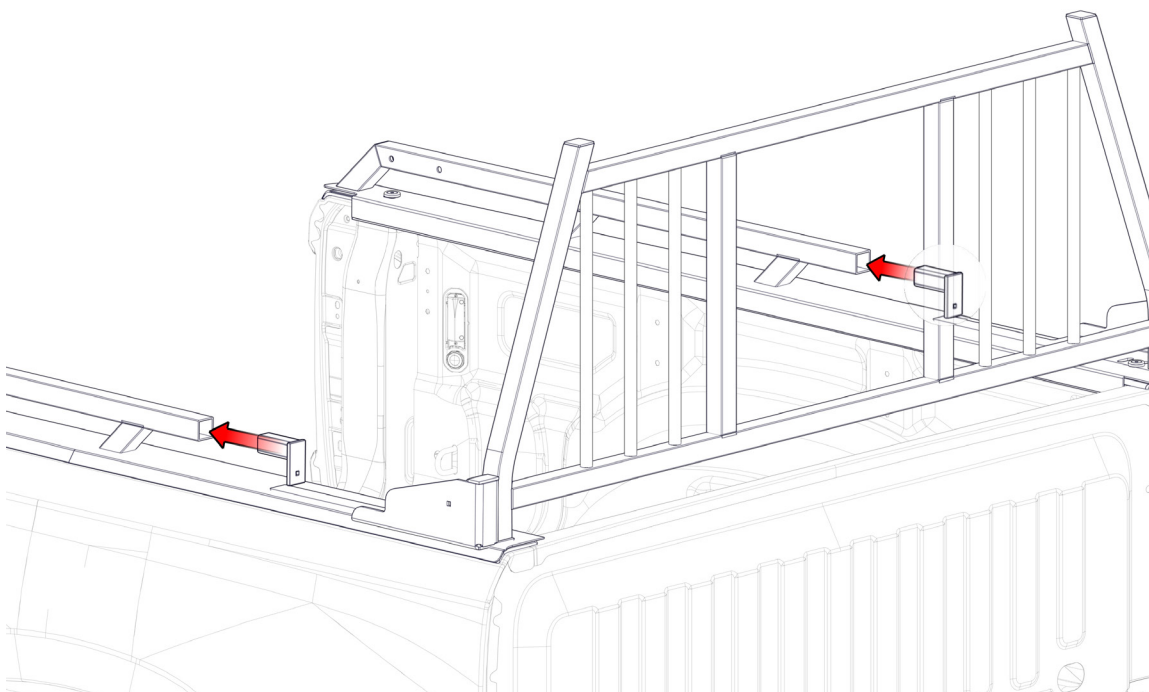
18.

**FOR INSTALLATIONS WITH WESTCAN REAR RACK ONLY. SKIP TO
STEP 19 FOR INSTALLATIONS WITHOUT WESTCAN REAR RACK.**

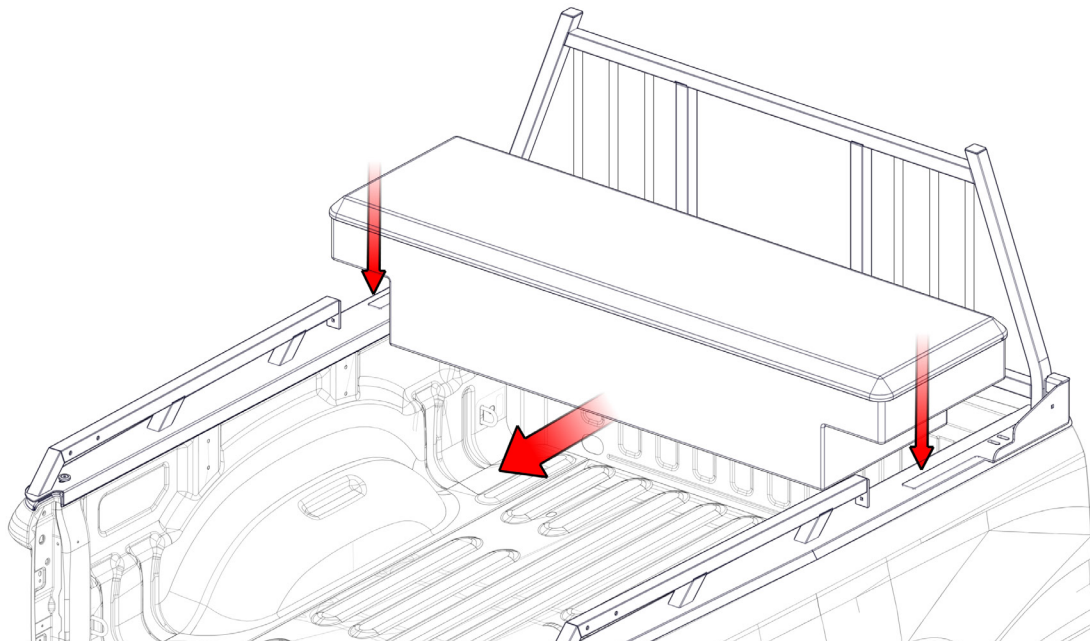
**HARDWARE INCLUDED WITH THE
REAR RACK INSTALL KIT**



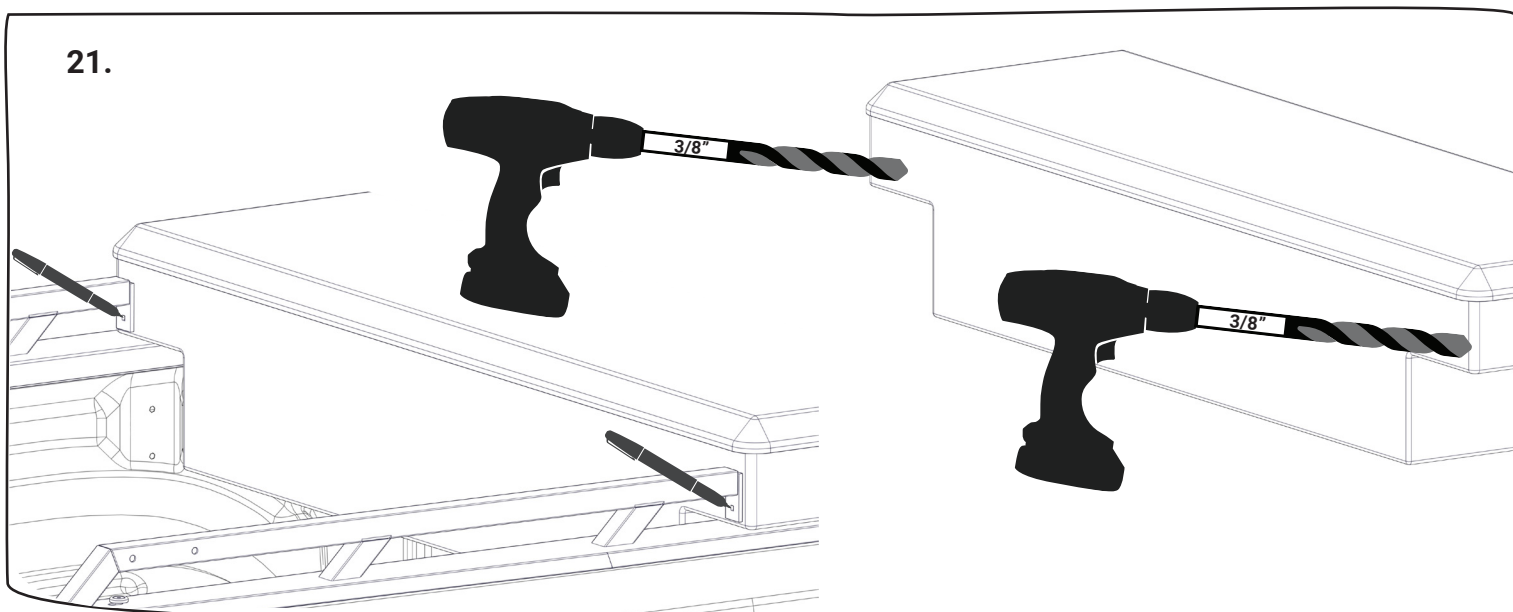
19.



20.



21.



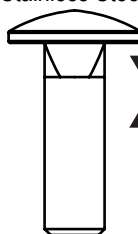
22.

5/16" Stainless Steel Flat Washer

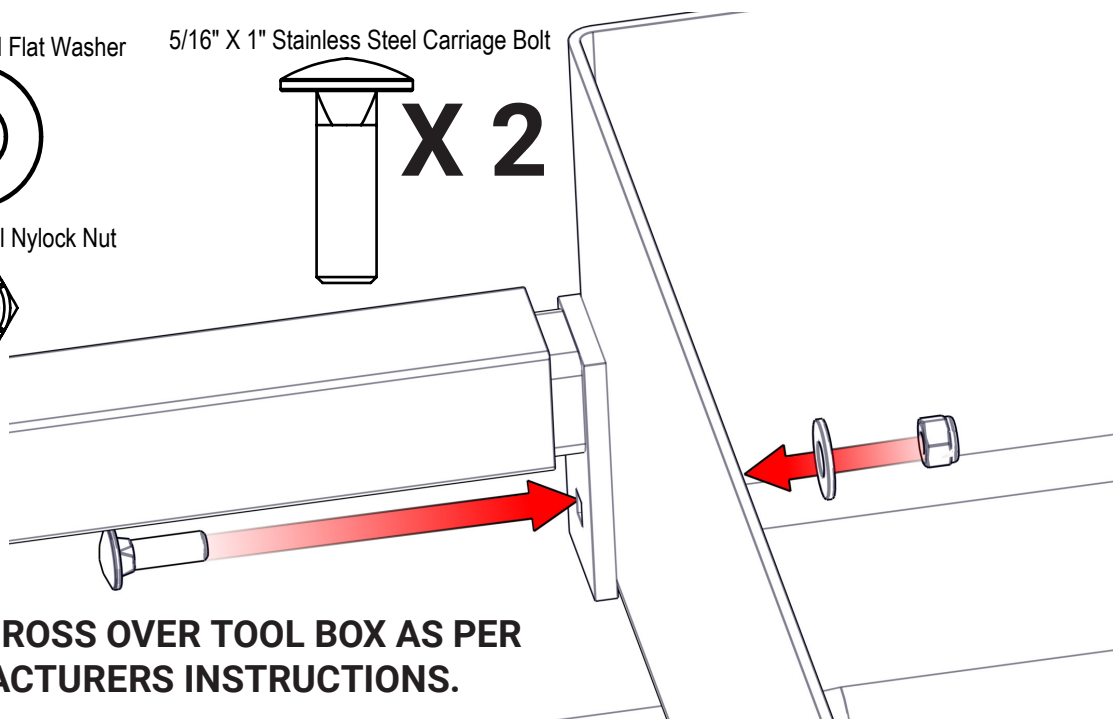
5/16" X 1" Stainless Steel Carriage Bolt



5/16" Stainless Steel Nylock Nut



X 2



**INSTALL YOUR CROSS OVER TOOL BOX AS PER
THE MANUFACTURERS INSTRUCTIONS.**

IF YOUR INSTALLING A LED CABGUARD
PLEASE REFER TO THE WIRING PIN OUT
BELOW.

- **Red = Left Turn Signal**
- **Yellow = Right Turn Signal**
- **Black = Tail / Marker Lights**
- **Blue = Back Up Lights**
- **White = Chassis Ground**