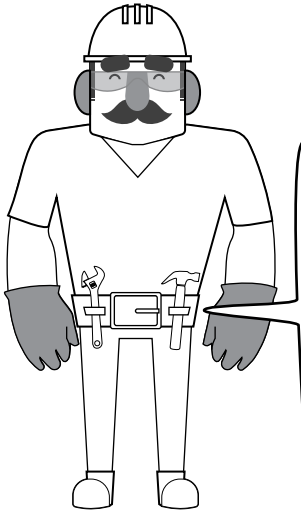
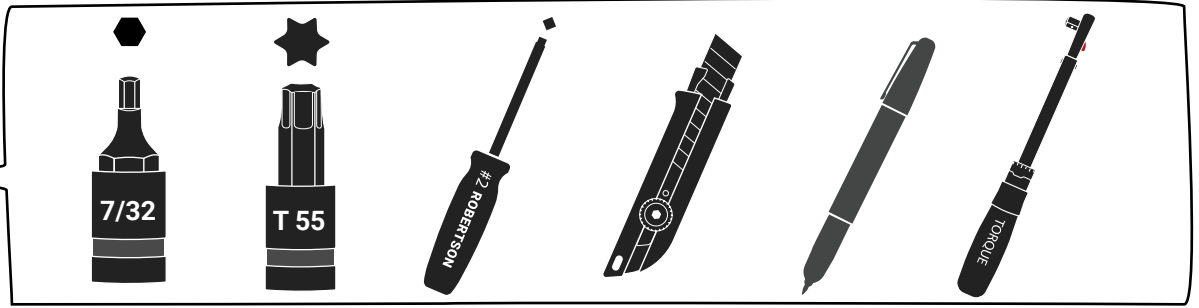


INSTALLATION INSTRUCTIONS: 2014+ SILVERADO/SIERRA DUALY RAIL CAP

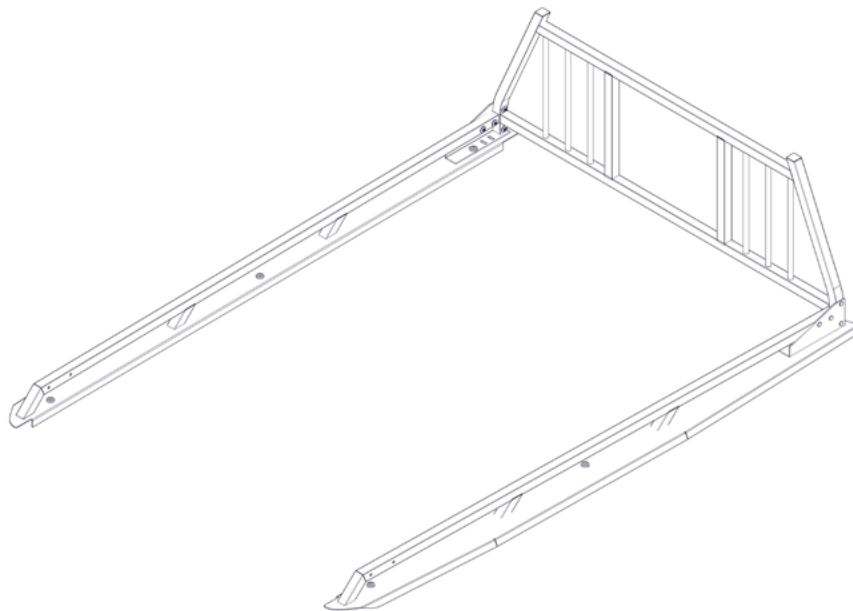


TOOLS NEEDED:



CAUTION:

This equipment is designed to be professionally installed by an approved up-fitter. Always wear ear and eye protection and exercise caution when installing Westcan products.



**LONG BOX
DUALY**

PREPARATION:

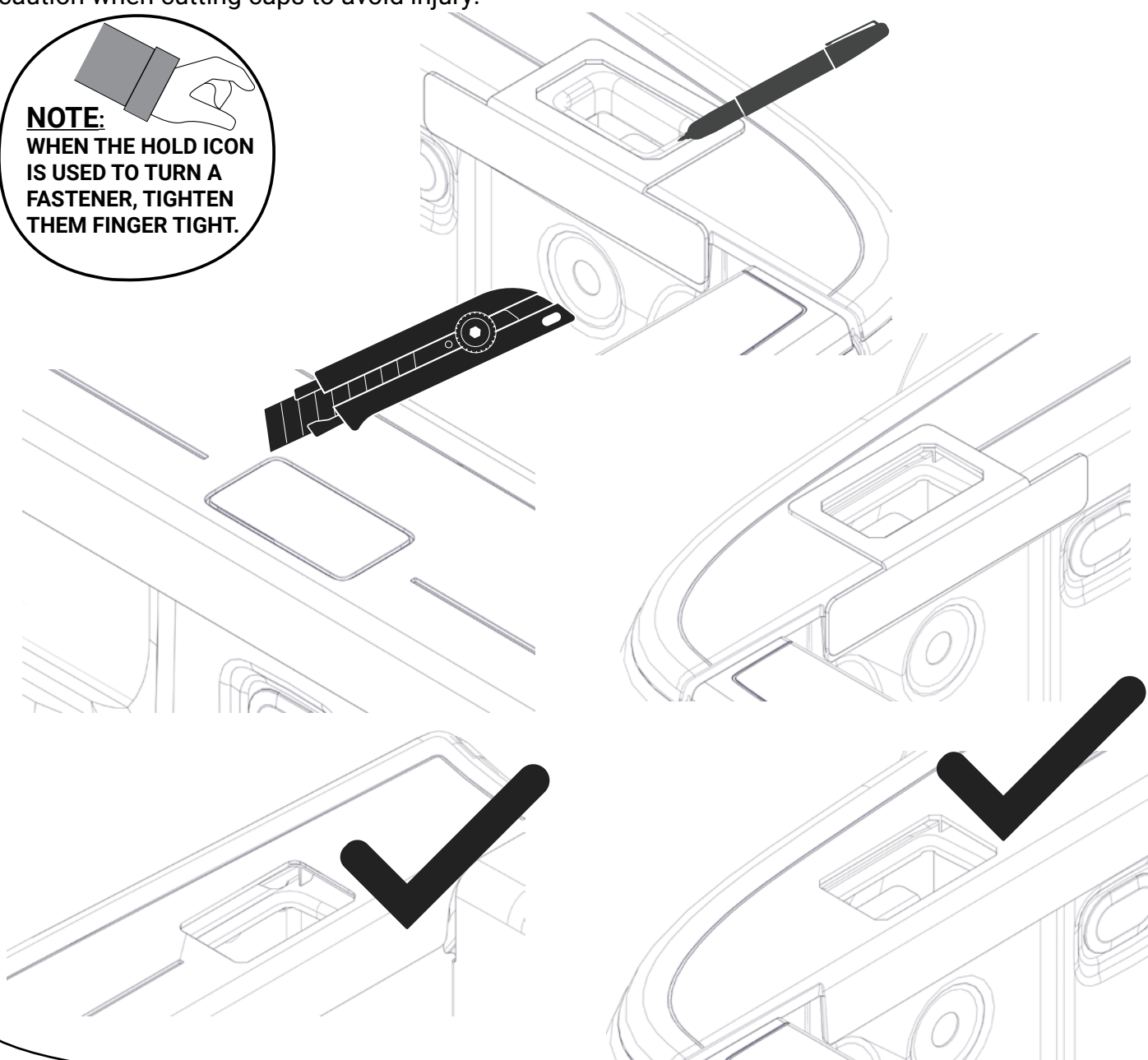
1. Ensure all parts are present and accounted for before installation. **Begin the installation of your cabguard before your rail caps.** Plan the location of your installation ahead of time and make sure your installation location does not impede any other components you are installing or damage the safety and functionality of your vehicle.
2. Exercise extreme diligence when drilling holes into a motor vehicle. Increasing complexity and model year changes can alter the location of fuel, hydraulic and electrical lines. Please visually inspect all locations prior to drilling.
3. Re-Torque the 3/8" x 1-3/4" Stainless Steel Countersink Bolt every 3 month.

BOX CAP PREPARATION:

Some truck box lengths require the plastic truck box caps to be cut to expose the stake pocket cutout. Use the provided cardboard template as a guide for cutting the box cap. Exercise caution when cutting caps to avoid injury.

NOTE:

WHEN THE HOLD ICON IS USED TO TURN A FASTENER, TIGHTEN THEM FINGER TIGHT.



1.

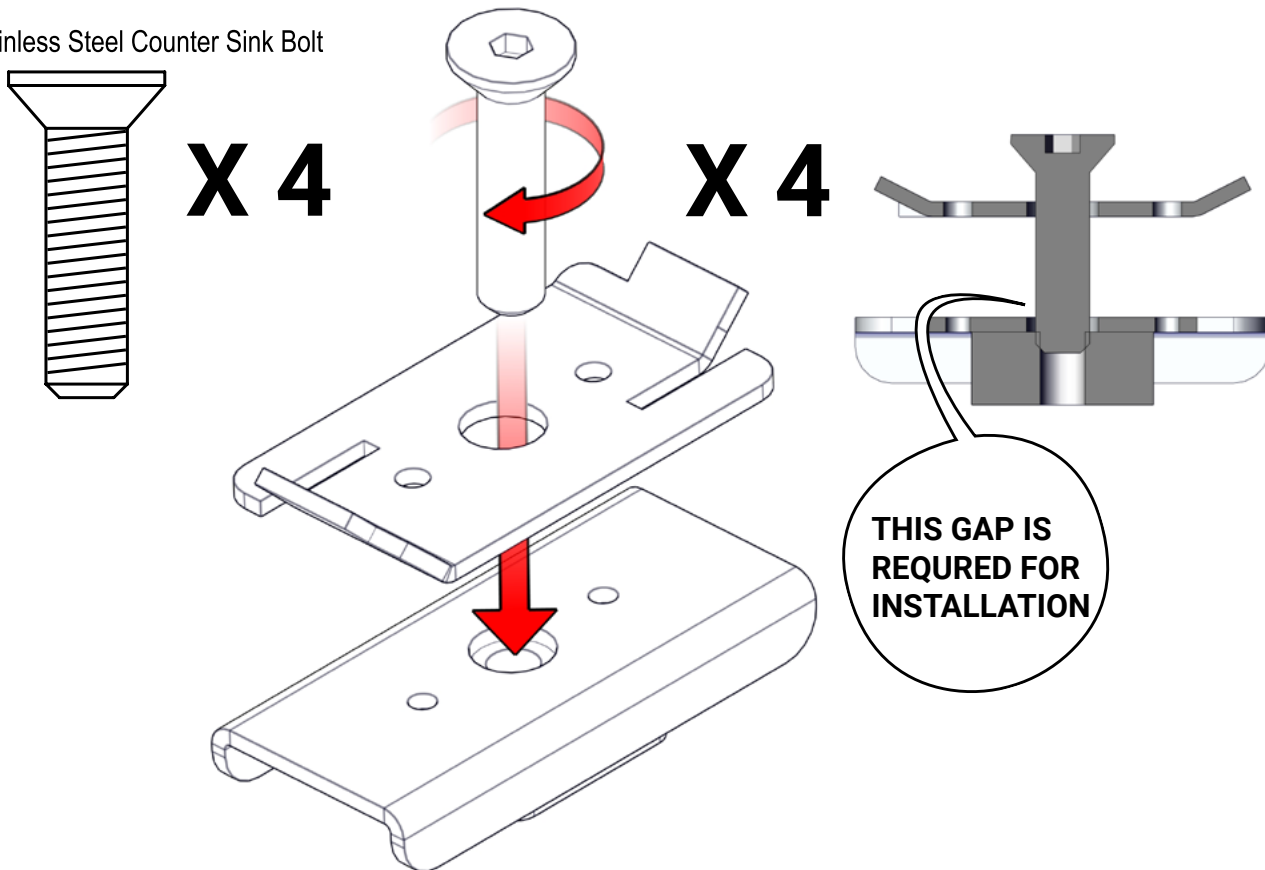
LONG BOX DUALY

CUT PLASTIC CAPS TO EXPOSE THE CENTER STAKE POCKET AND ENLARGE REAR STAKE POCKET RELIEF

2.

LONG BOX DUALY

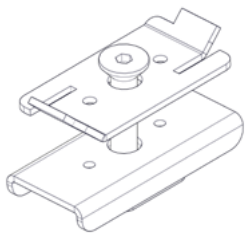
3/8 X 1 3/4 Stainless Steel Counter Sink Bolt



4.

**REQUIRED FOR MIDDLE AND REAR
STAKE POCKES**

#10 - 1" Plated Zinc Robertson Powerhead Drill Tip Screw

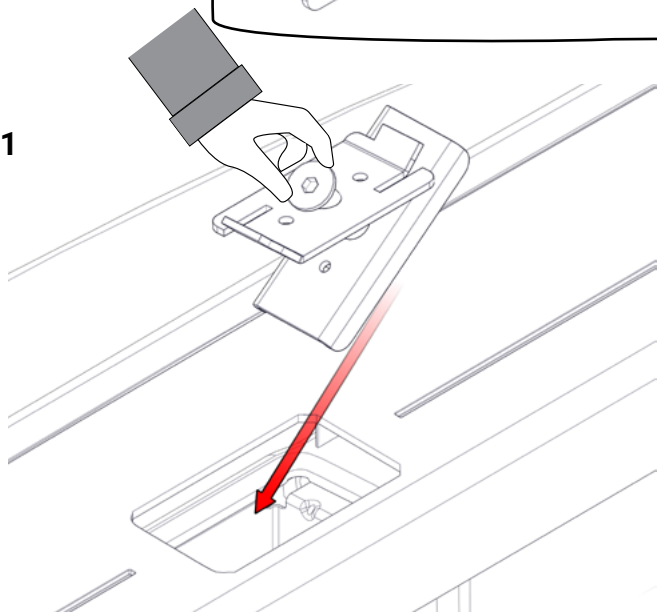


X 4

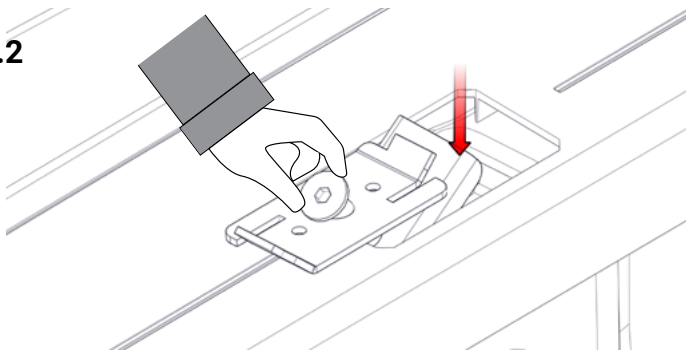


X 8

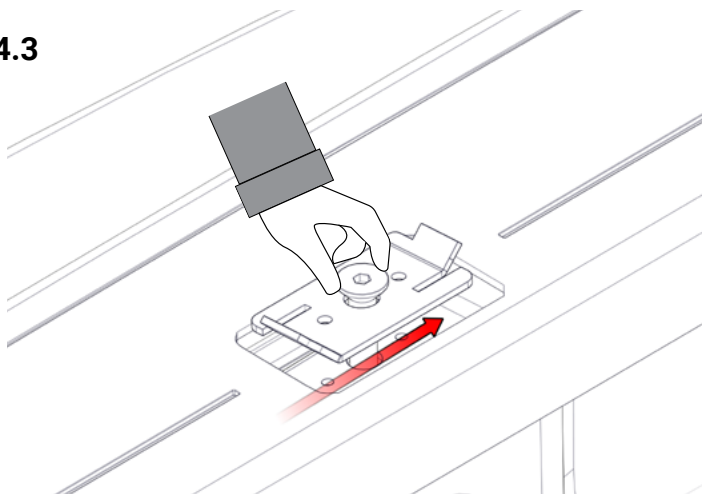
4.1



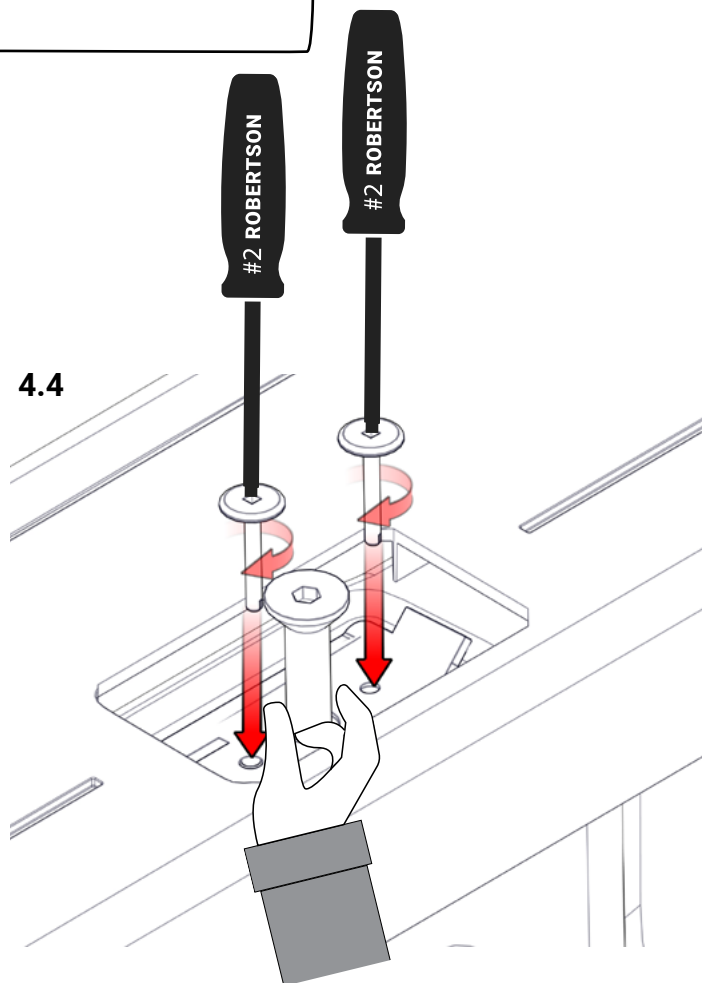
4.2



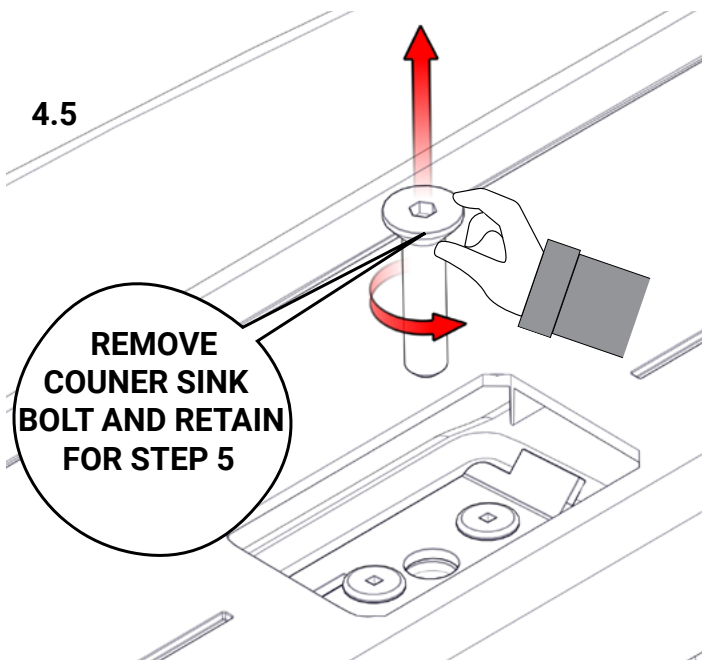
4.3



4.4



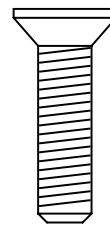
4.5



5.

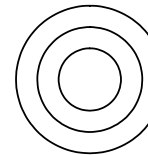
EXTRA SHORT BOX AND SHORT BOX

3/8 X 1 3/4 Stainless Steel Counter Sink Bolt



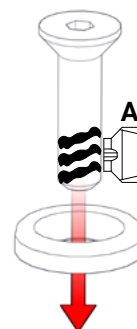
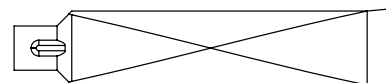
X 2

3/8" Stainless Steel Finishing Washer

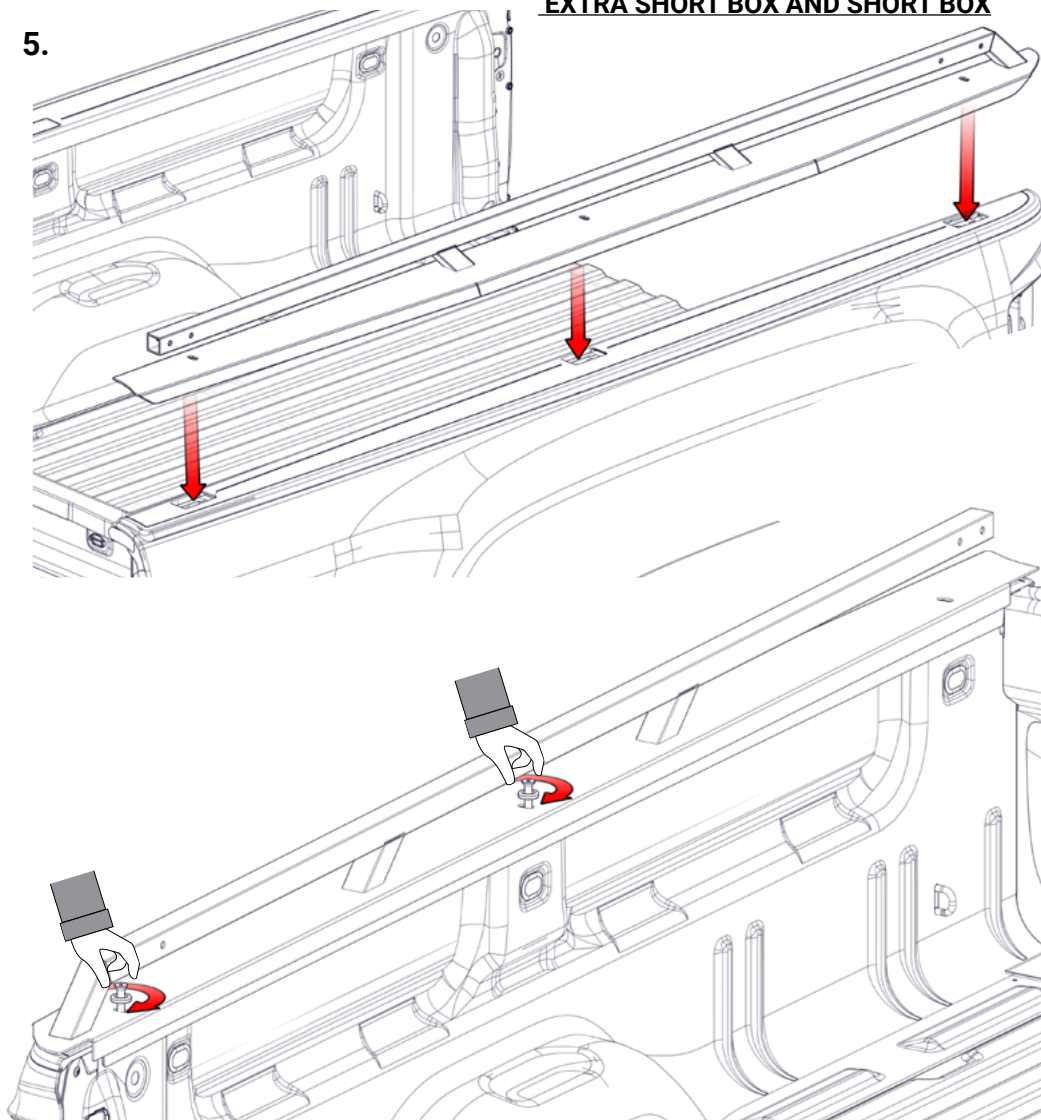


X 2

Anti-Sieze Lubricant

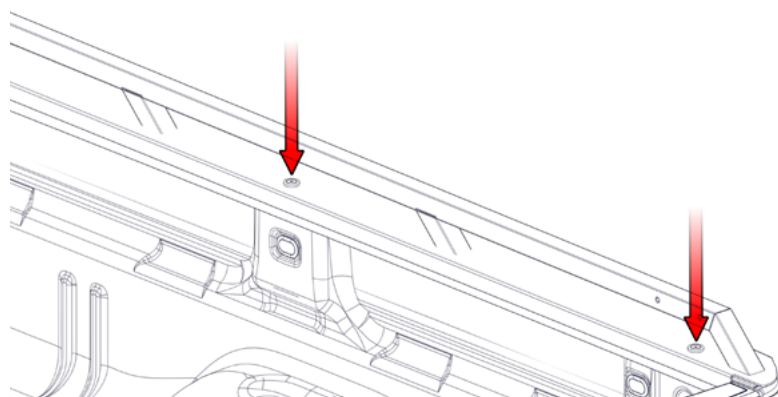
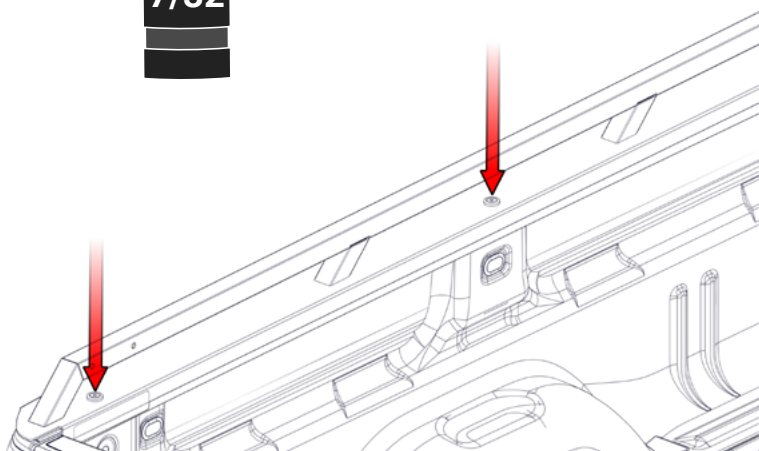


APPLY ANTI-SIEZE

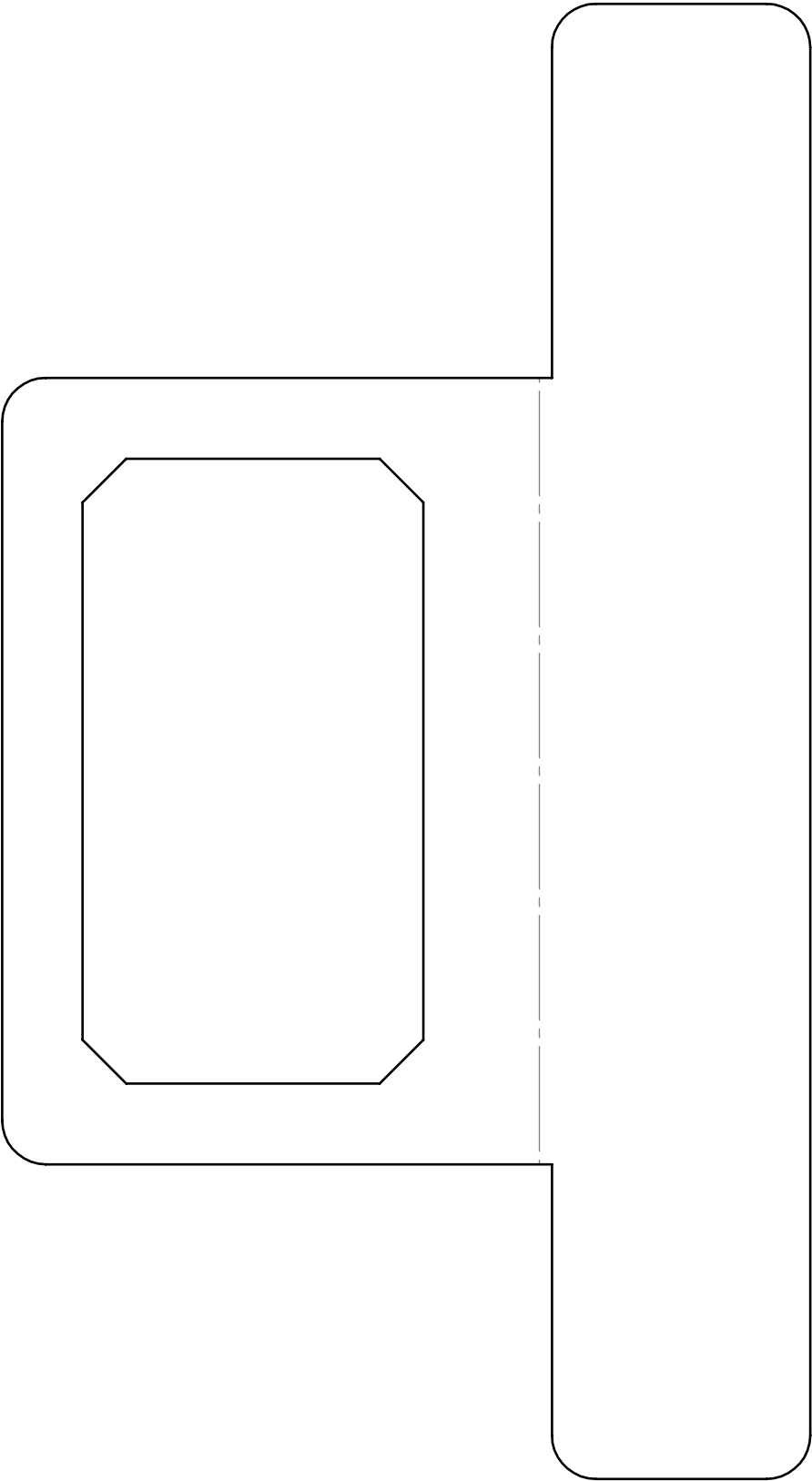


**=90 IN-LBF
=7.5 FT-LBF**

**IF INSTALLING WITH A CABGUARD,
TORQUE DOWN WHEN THE CABGUARD
INSTALL IS COMPLETE.**



PRINT OUT AT A 1:1 SCALE AND CUT OUT. FOLD ALONG THE DOTTED LINE.



WESTCAN
MANUFACTURING LTD.

DESCRIPTION: Chevrolet dually rear stakepocket cutout template

UNLESS OTHERWISE SPECIFIED, DIMENSIONS ARE IN INCHES				Rev:		
TOLERANCE				DRAWN BY: DTocher	MATERIAL:	
ANG.	FRAC.	.XX	.XXX	DATE: 14/05/18	PART NR:	Sheet 1 OF 1
± 0.5"	1/32"	±0.01"	±0.005"			

PROPRIETARY AND CONFIDENTIAL
THE INFORMATION CONTAINED IN THIS
DRAWING IS THE SOLE PROPERTY OF
WESTCAN MANUFACTURING LTD. ANY
REPRODUCTION IN PART OR AS A WHOLE
WITHOUT THE WRITTEN PERMISSION OF
WESTCAN MANUFACTURING LTD IS
PROHIBITED.