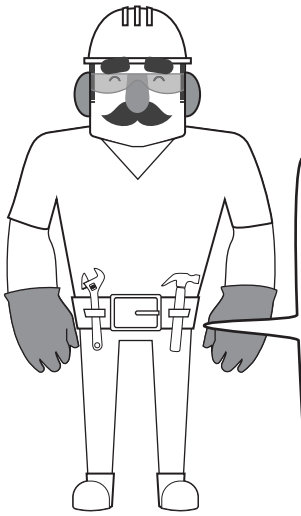
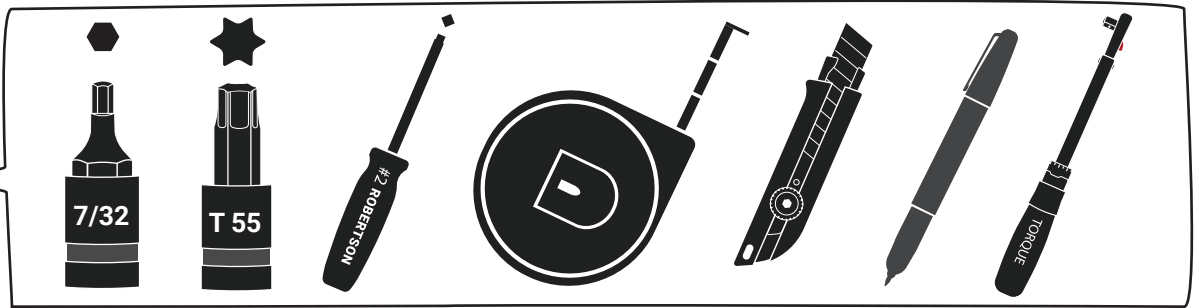


## INSTALLATION INSTRUCTIONS: 2016+ TITAN CAB GUARD

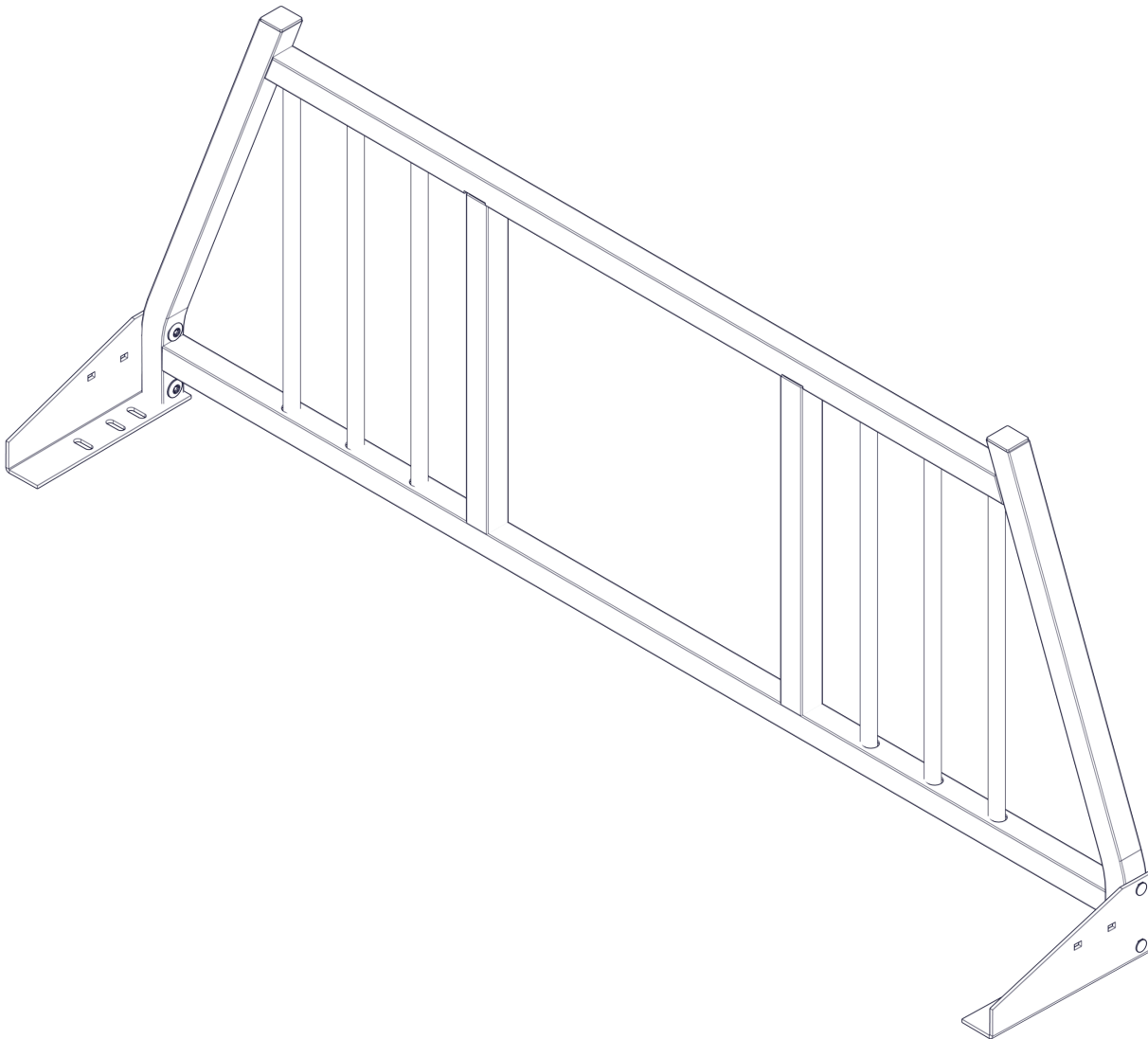


### TOOLS NEEDED:



### CAUTION:

This equipment is designed to be professionally installed by an approved up-fitter. Always wear ear and eye protection and exercise caution when installing Westcan products.

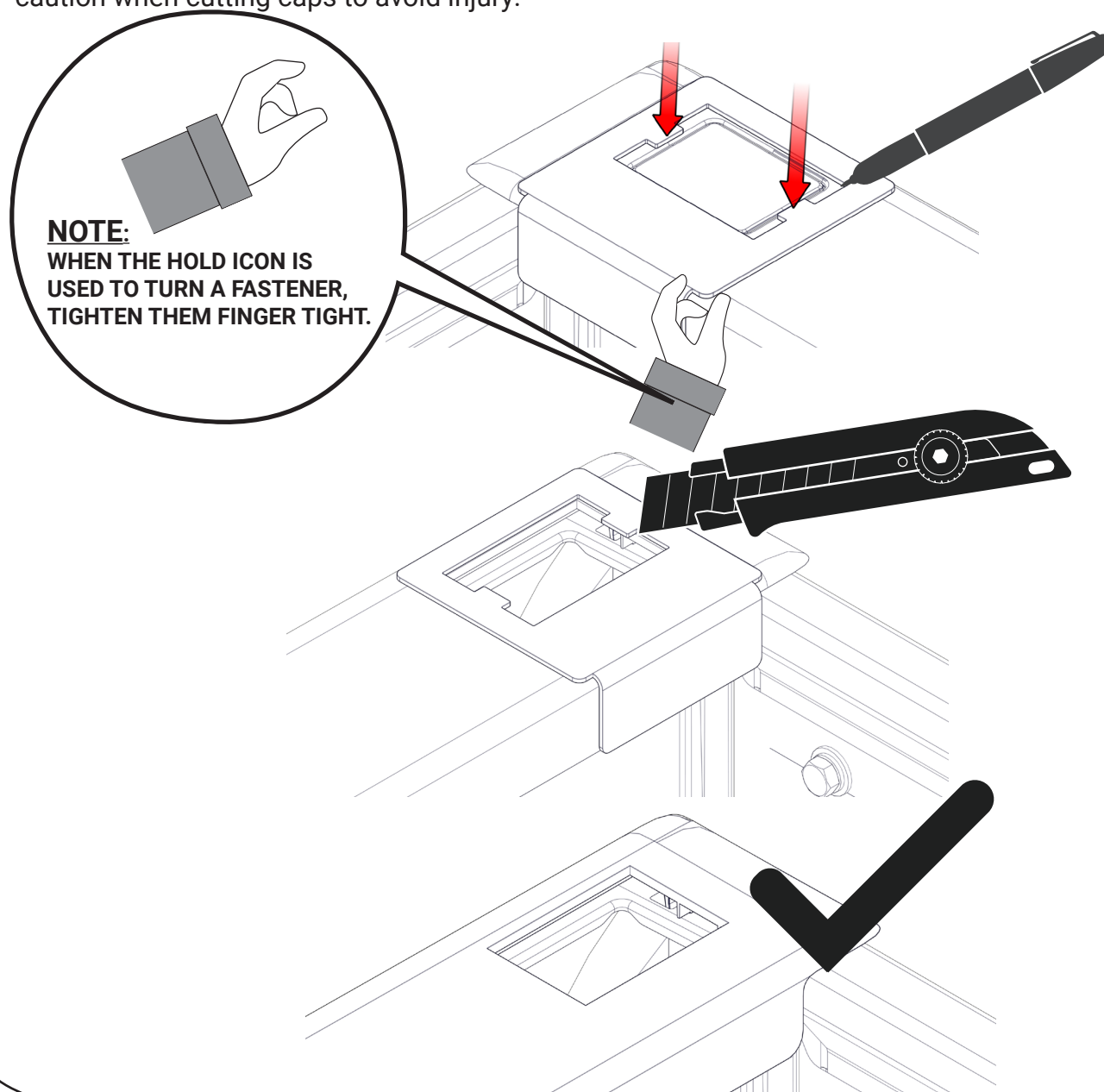


## PREPARATION:

1. Ensure all parts are present and accounted for before installation. **Begin the installation of your cabguard before your rail caps.** Plan the location of your installation ahead of time and make sure your installation location does not impede any other components you are installing or damage the safety and functionality of your vehicle.
2. Exercise extreme diligence when drilling holes into a motor vehicle. Increasing complexity and model year changes can alter the location of fuel, hydraulic and electrical lines. Please visually inspect all locations prior to drilling.
3. Re-Torque the 3/8" x 1-3/4" Stainless Steel Countersink Bolt every 3 month.

## BOX CAP PREPARATION:

Use the provided cardboard template as a guide for cutting the box cap. The tabs on the guide should line up with the factory cut lines on the plastic box cap to center the guide. Exercise caution when cutting caps to avoid injury.

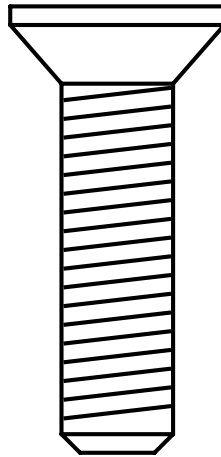


1

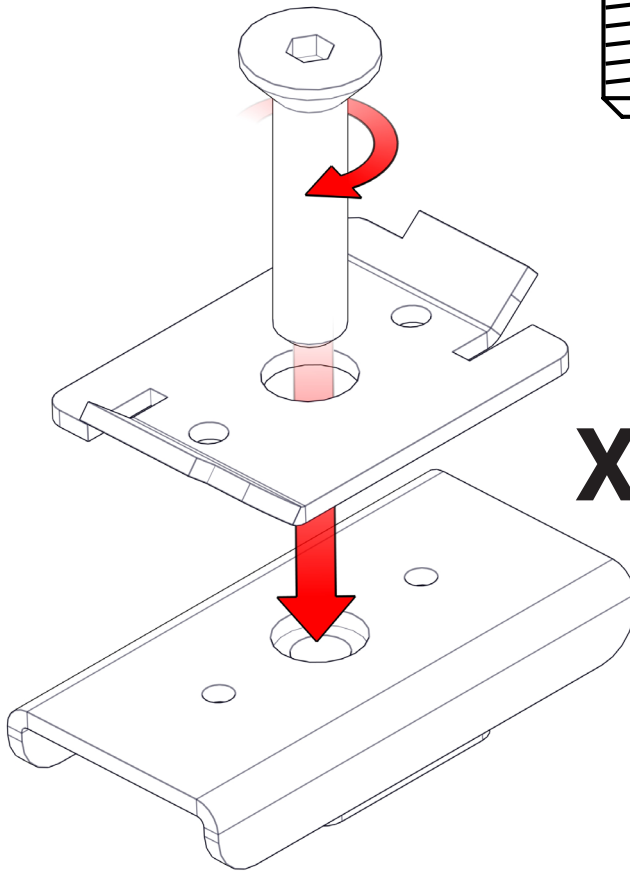
**CUT PLASTIC CAP TO EXPOSE THE FRONT STAKE POCKETS.**

2

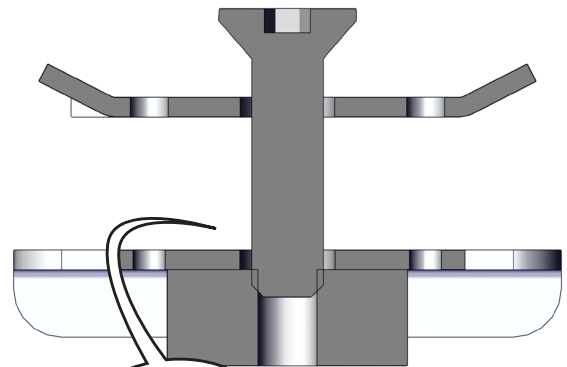
**3/8 X 1 3/4 Stainless Steel Counter Sink Bolt**



**X 2**



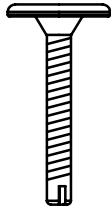
**X 2**



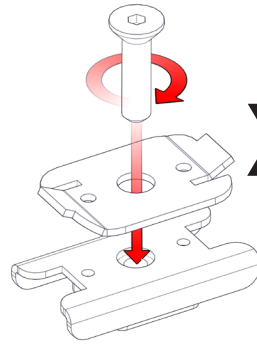
**THIS GAP IS  
REQUIRED FOR  
INSTALLATION**

3.

#10 - 1" Plated Zinc Robertson Powerhead Drill Tip Screw

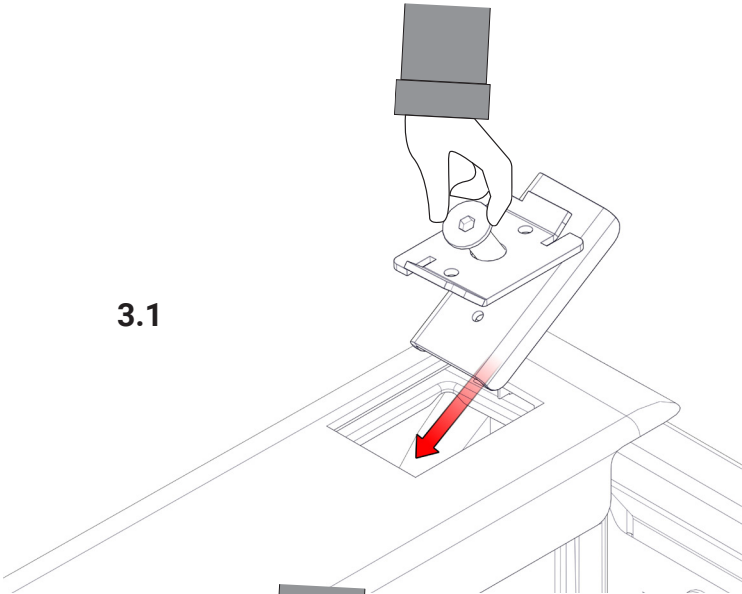


X 4

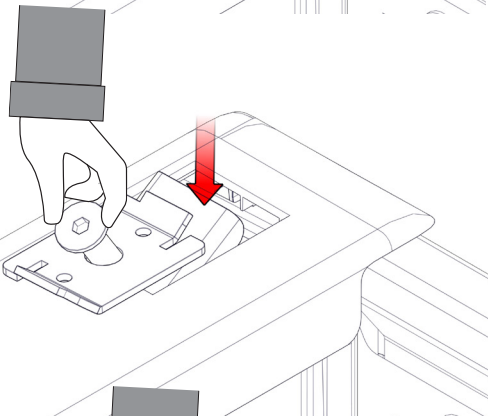


X 2

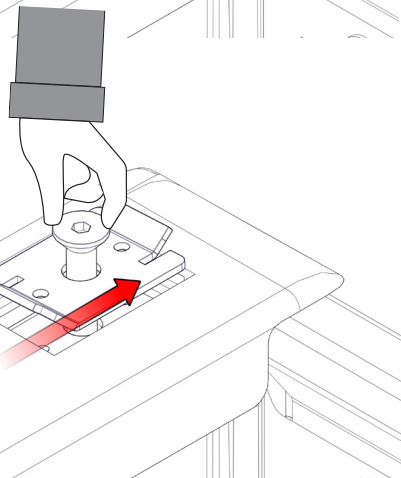
3.1



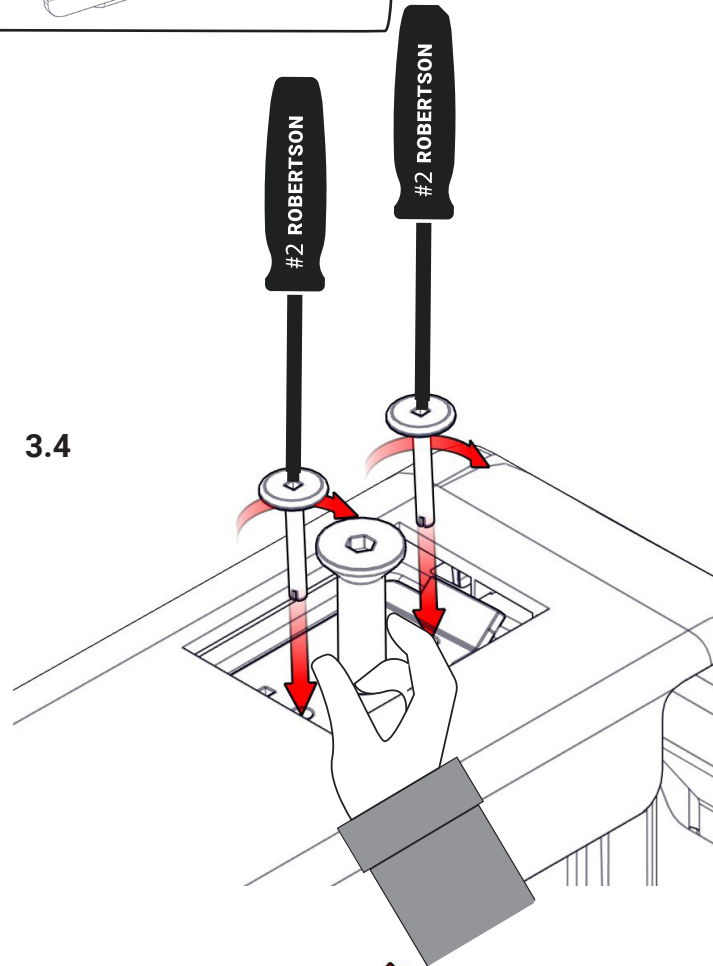
3.2



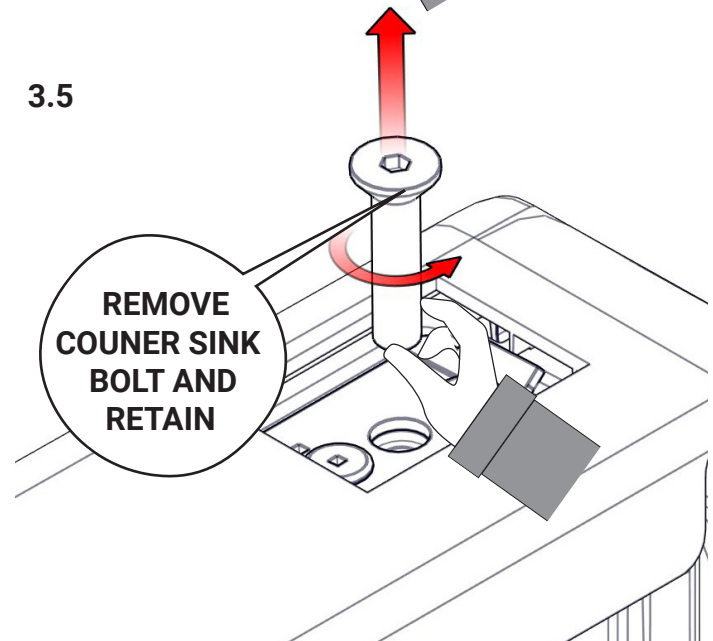
3.3



3.4



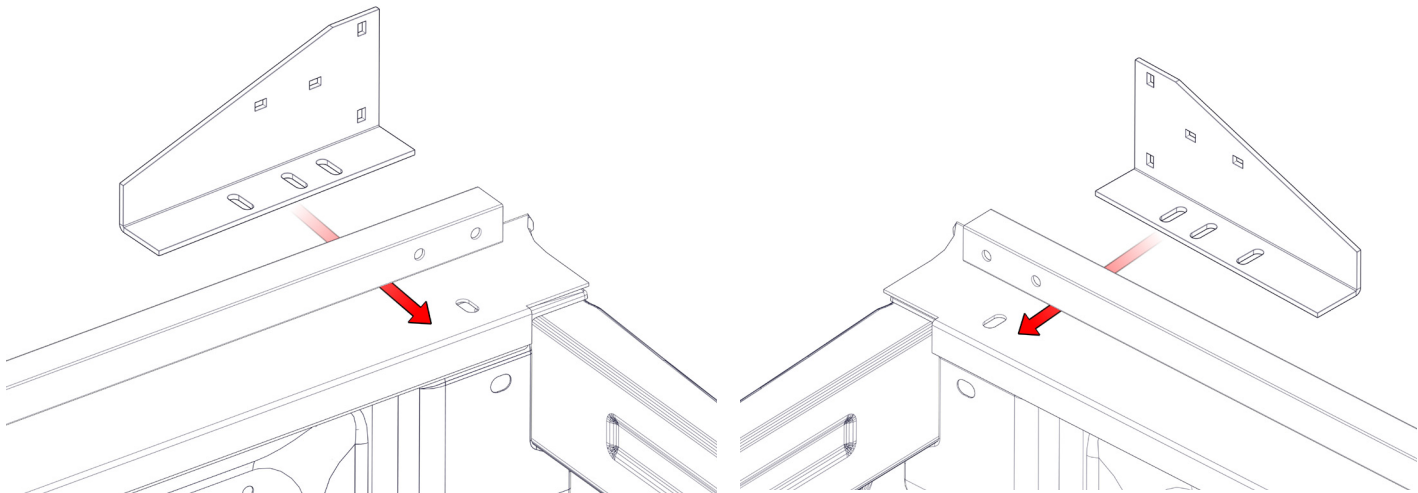
3.5





**IF REQUIRED, INSTALL YOUR RAILCAPS PRIOR TO PROCEEDING WITH STEP 4 OR GO TO STEP 13 FOR INSTALLATIONS WITHOUT RAILCAPS.**

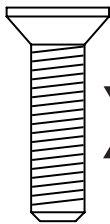
**4.**



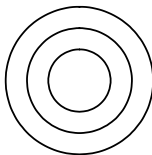
**5.**

3/8 X 1 3/4 Stainless Steel Counter Sink Bolt

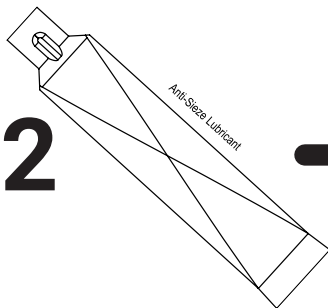
3/8" Stainless Steel Finishing Washer



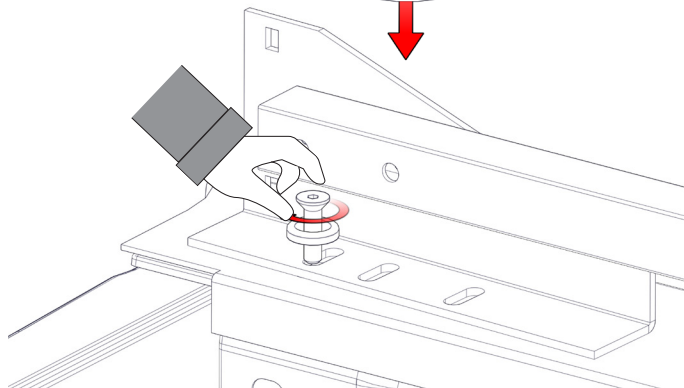
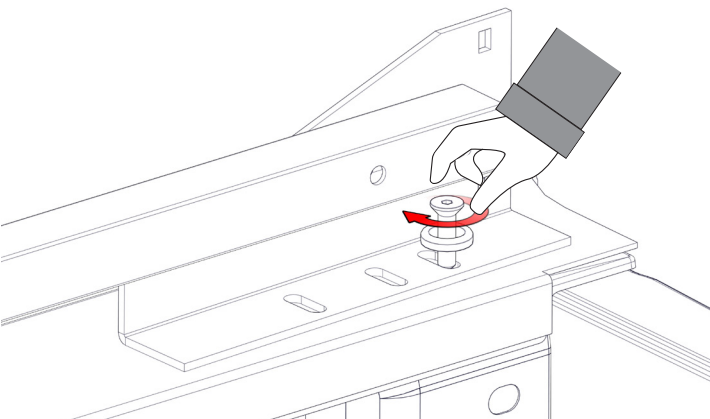
**X 2**



**X 2**



**APPLY ANTI-SIEZE**

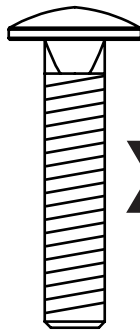


**6.**

**HARDWARE FOR STEP 6-7 IS INCLUDED WITH YOUR RAILCAPS.**



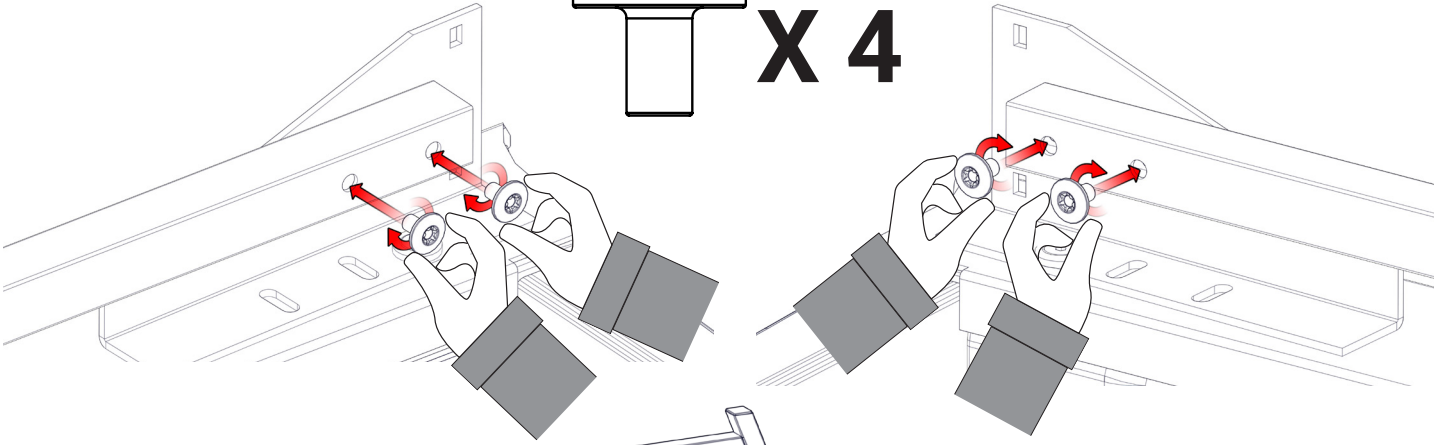
5/16 X 1-1/2 Stainless Steel Carriage Bolt



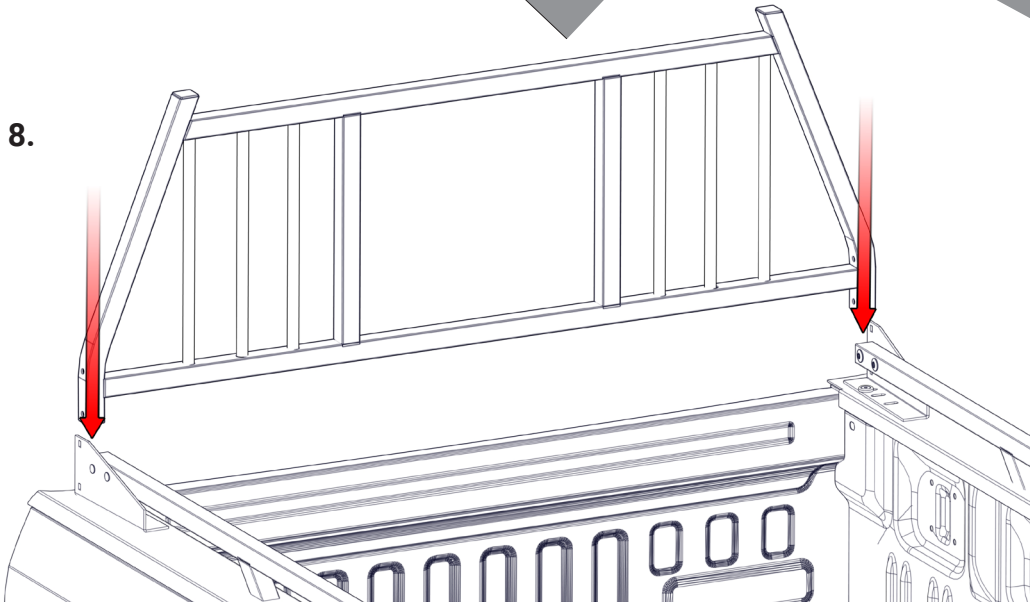
**X 4**

7.

5/16" X 5/8" Zinc Plated Camtainer Nut



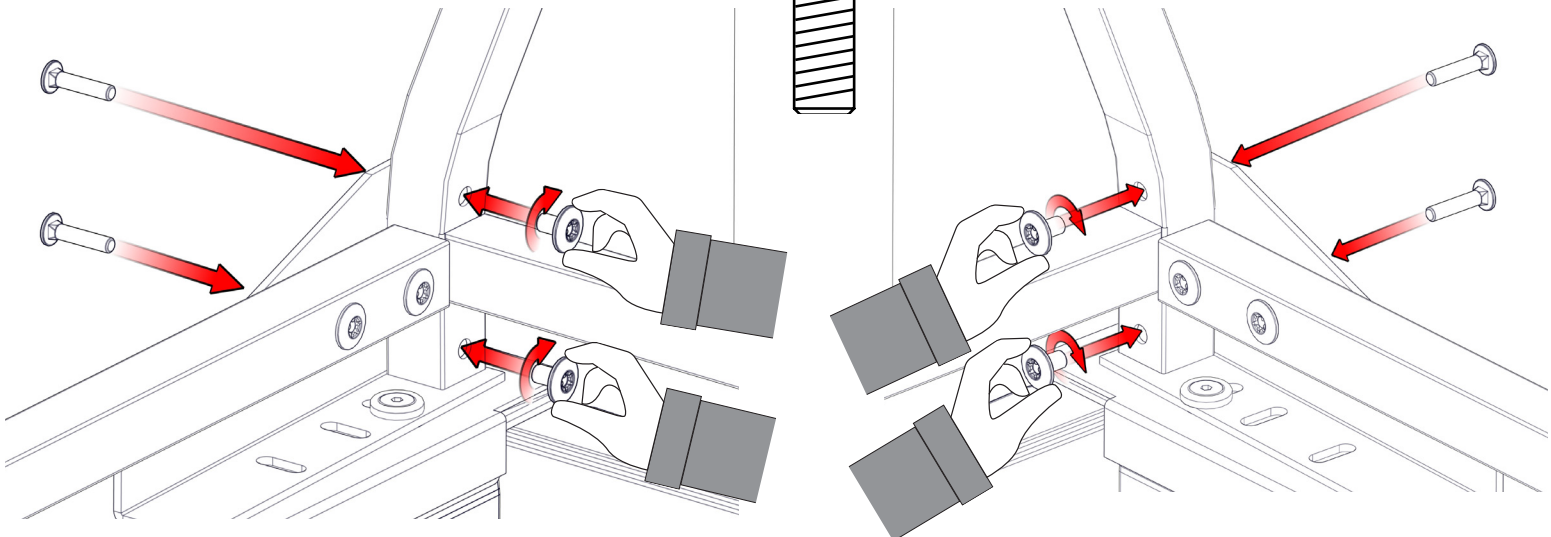
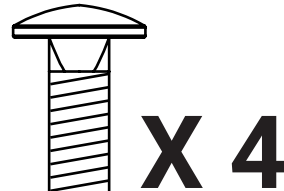
8.



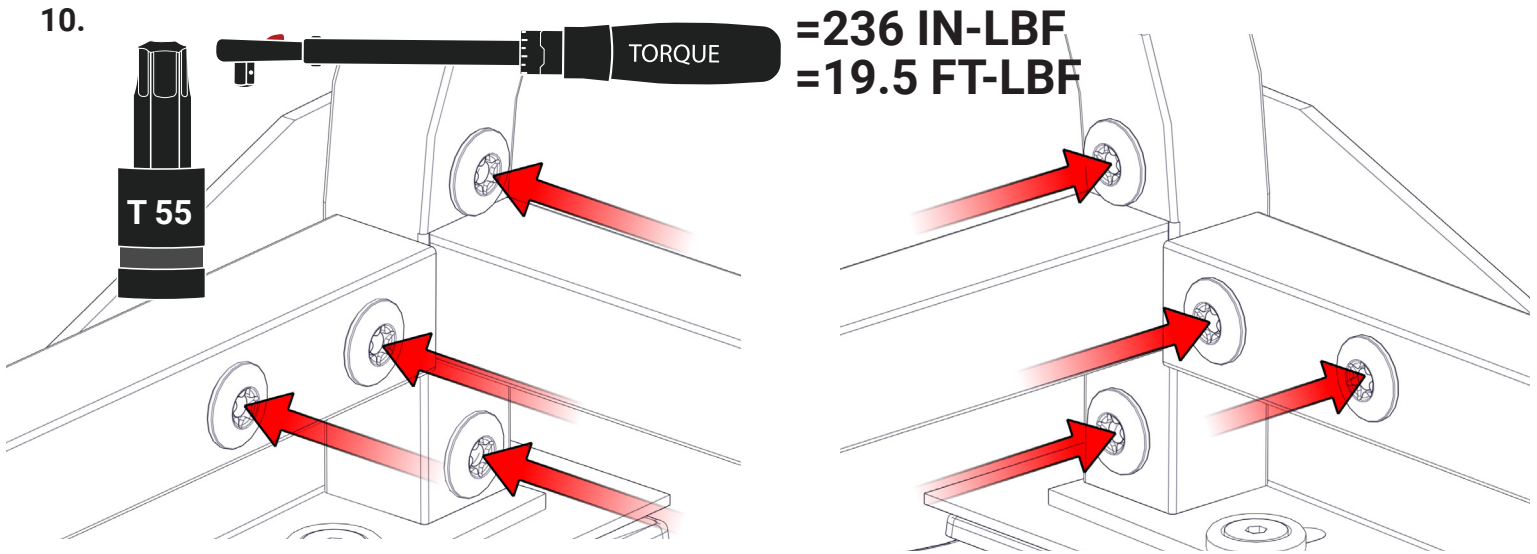
9.

5/16" X 5/8" Zinc Plated Camtainer Nut

5/16 X 1-1/2 Stainless Steel Carriage Bolt



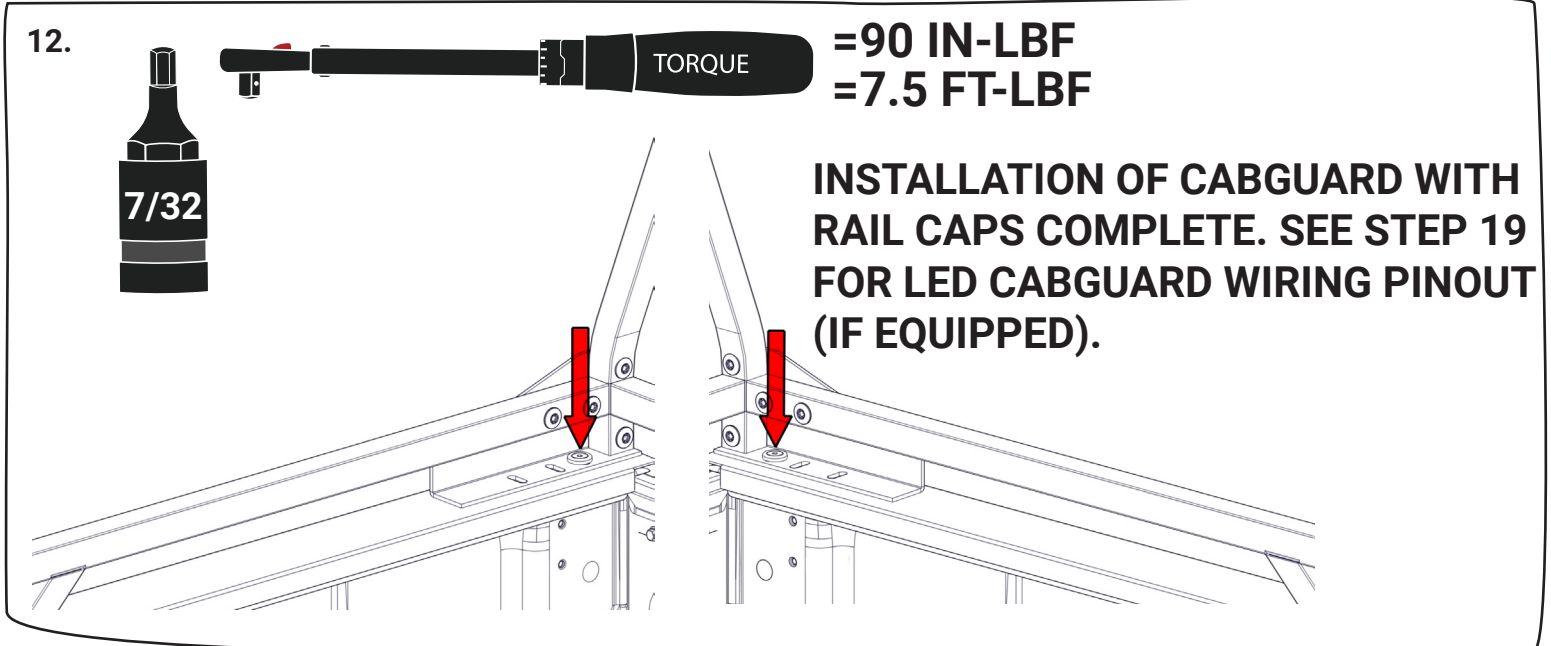
10.



11.

## **CENTER CAB GUARD ON TRUCK BOX.**

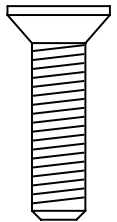
12.



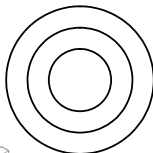
13.

3/8 X 1 3/4 Stainless Steel Counter Sink Bolt

3/8" Stainless Steel Finishing Washer

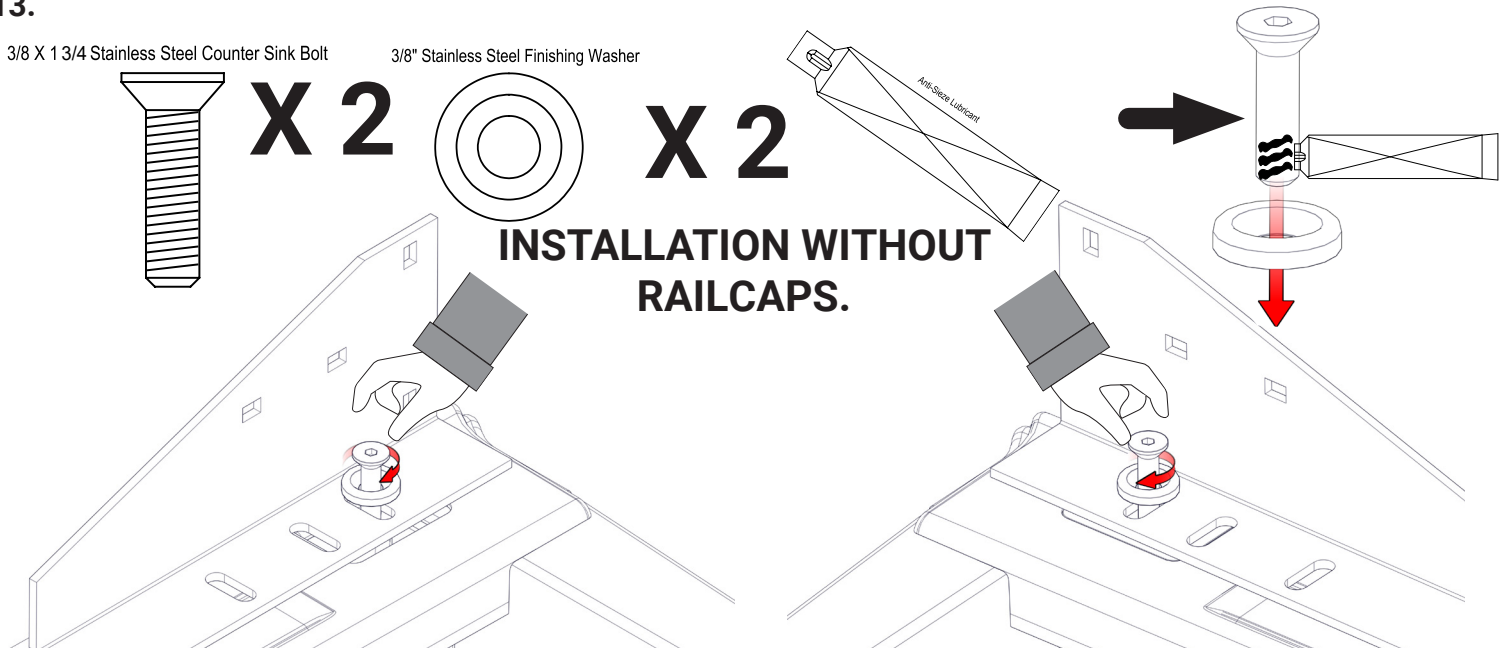


**X 2**

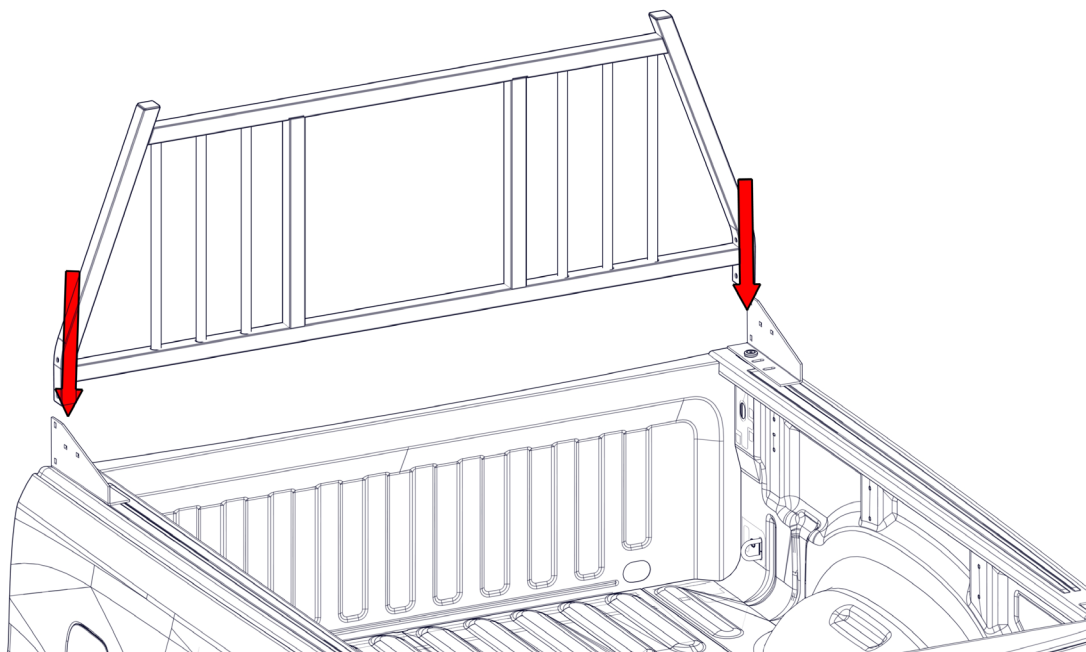


**X 2**

**INSTALLATION WITHOUT RAILCAPS.**



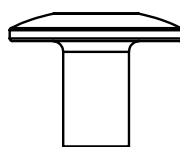
14.



15.

5/16" X 5/8" Zinc Plated Camtainer Nut

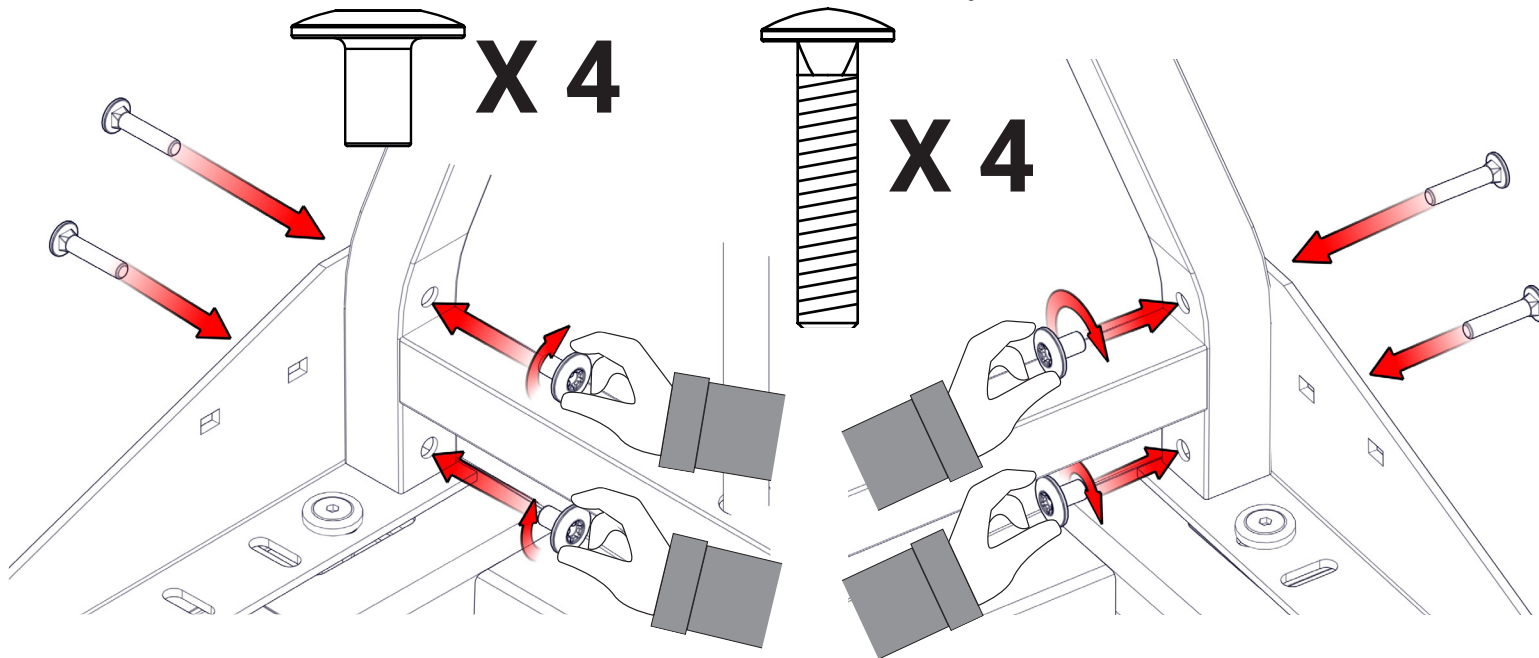
5/16 X 1-1/2 Stainless Steel Carriage Bolt



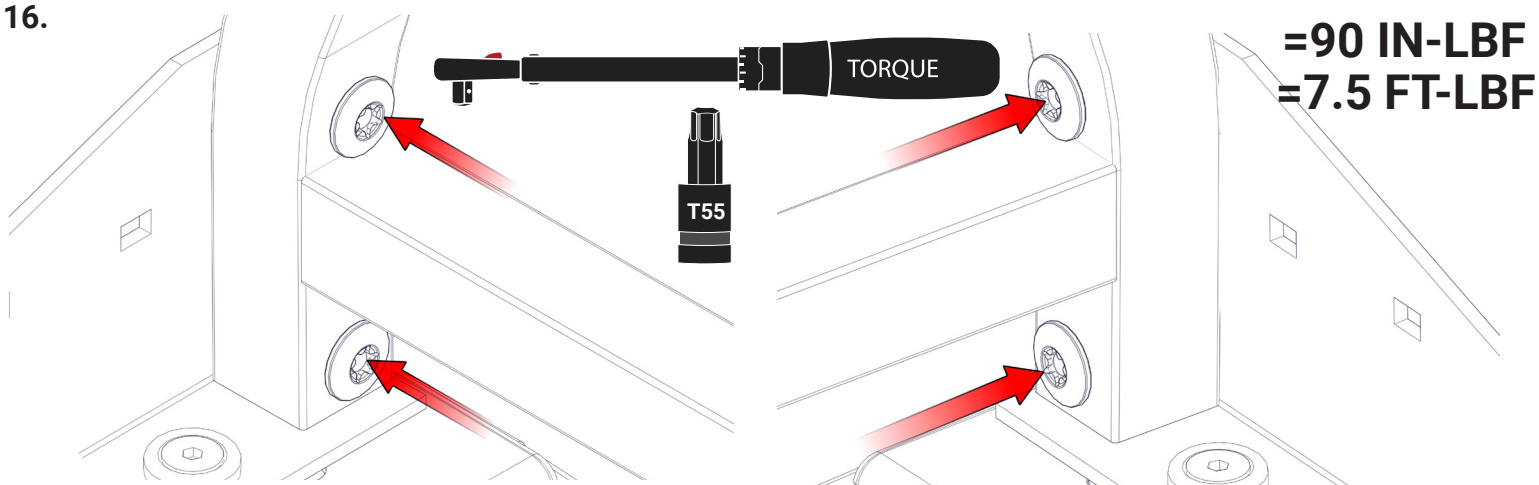
**X 4**



**X 4**

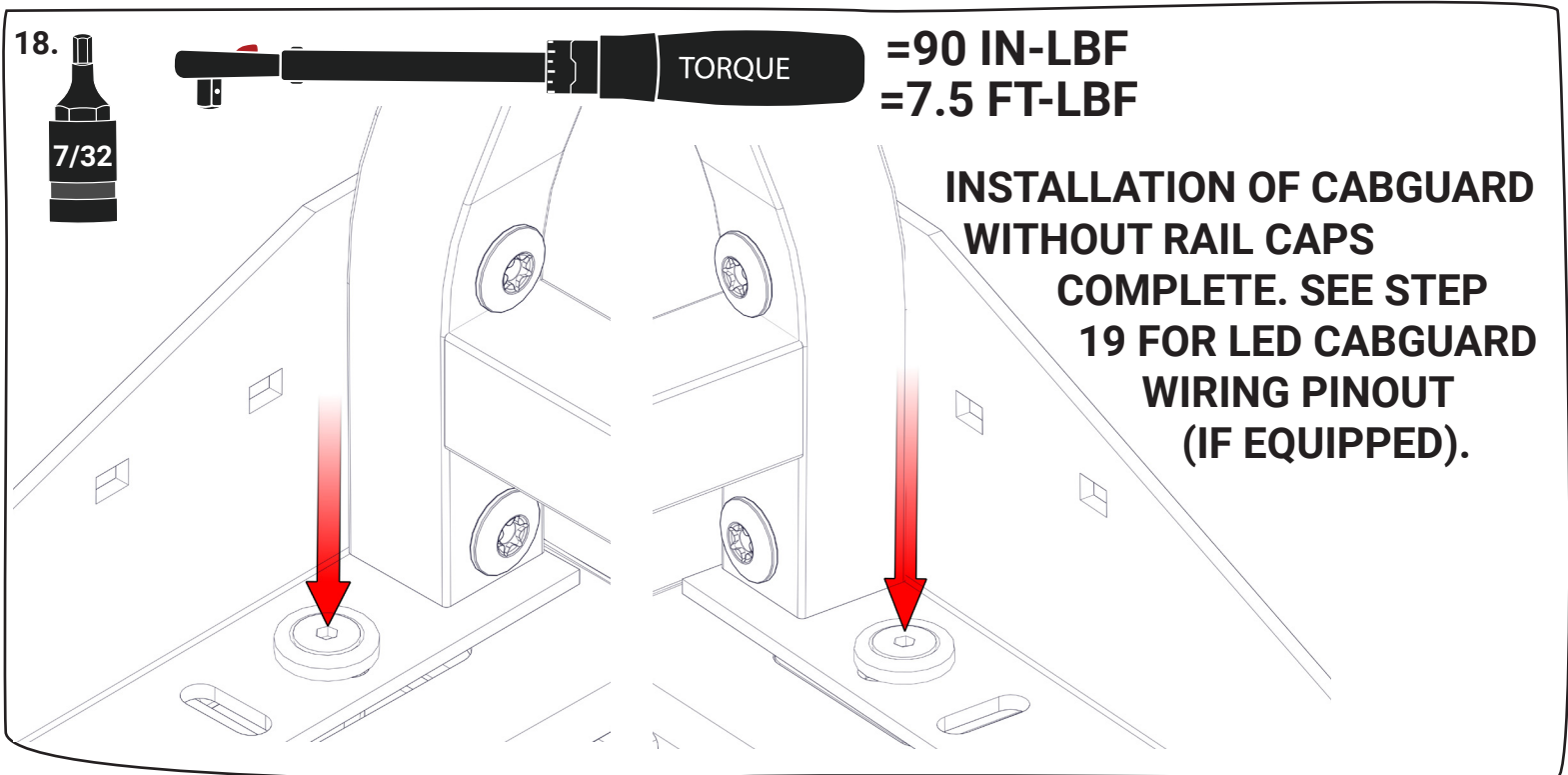


16.





17. **CENTER CAB GUARD ON TRUCK BOX AND  
INSTALL A SECONDARY HOLD DOWN KIT.**

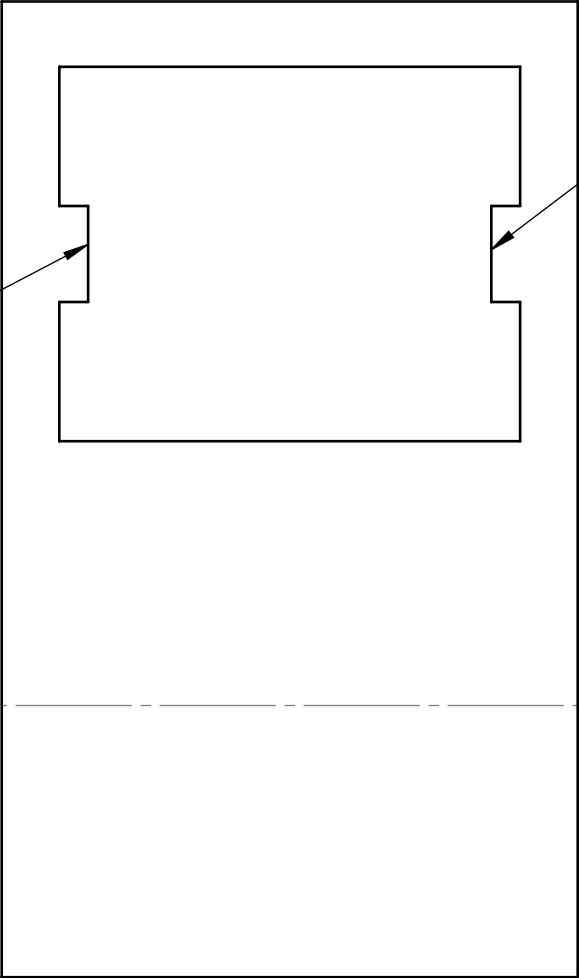


19. **IF YOUR INSTALLING A LED CABGUARD  
PLEASE REFER TO THE WIREING PINOUT  
BELOW.**

- **Red = Left Turn Signal**
- **Yellow = Right Turn Signal**
- **Black = Tail / Marker Lights**
- **Blue = Back Up Lights**
- **White = Chassis Ground**

PRINT AT A 1:1 SCALE AND CUT OUT. FOLD ALONG DOTTED LINE.

TABS LINE UP WITH THE EDGE OF THE STAKE POCKET EMBOSS FOR TEMPLATE POSITIONING. CUT THE STAKE POCKET HOLE SQUARE.



TABS LINE UP WITH THE EDGE OF THE STAKE POCKET EMBOSS FOR TEMPLATE POSITIONING. CUT THE STAKE POCKET HOLE SQUARE.

PROPRIETARY AND CONFIDENTIAL  
THE INFORMATION CONTAINED IN THIS  
DRAWING IS THE SOLE PROPERTY OF  
WESTCAN MANUFACTURING LTD. ANY  
REPRODUCTION IN PART OR AS A WHOLE  
WITHOUT THE WRITTEN PERMISSION OF  
WESTCAN MANUFACTURING LTD IS  
PROHIBITED.

UNLESS OTHERWISE SPECIFIED, DIMENSIONS ARE IN INCHES			
TOLERANCE			
ANG.	FRACTION	XX	.XXX
± 0.5°	1/32"	±0.01"	±0.005"

Rev:	MATERIAL:	Sheet1 OF 1
DRAWN BY: Dtrocher	PART NR: 2016+ Titan stake pocket cutout template	
DATE: 18/10/18		

WESTCAN MANUFACTURING LTD.		
DESCRIPTION: Titan stake pocket cutout template		